

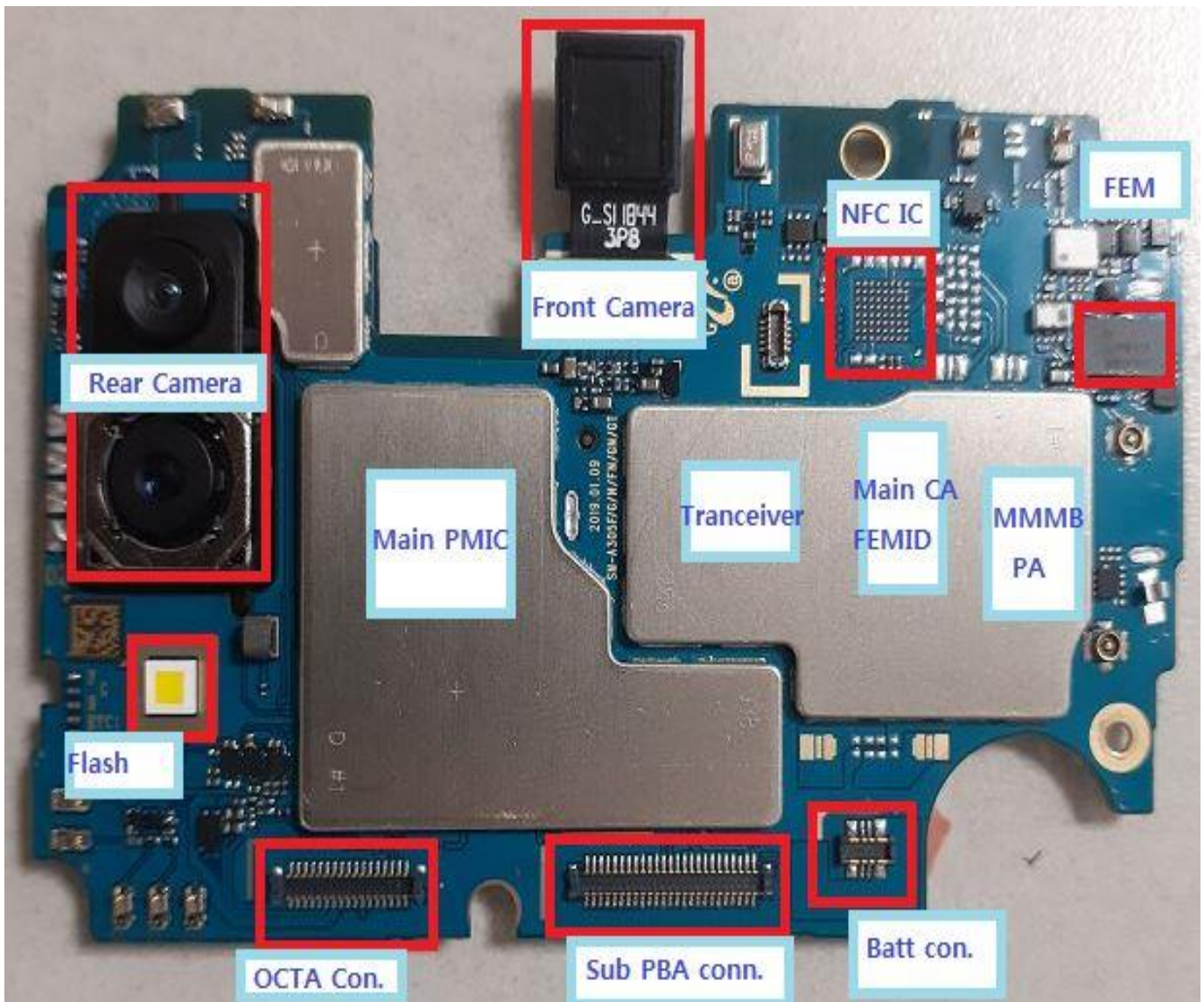
---

## 8. Level 3 Repair

---

### 8-1. 부품 배치

PBA TOP Side



---

삼성전자주식회사

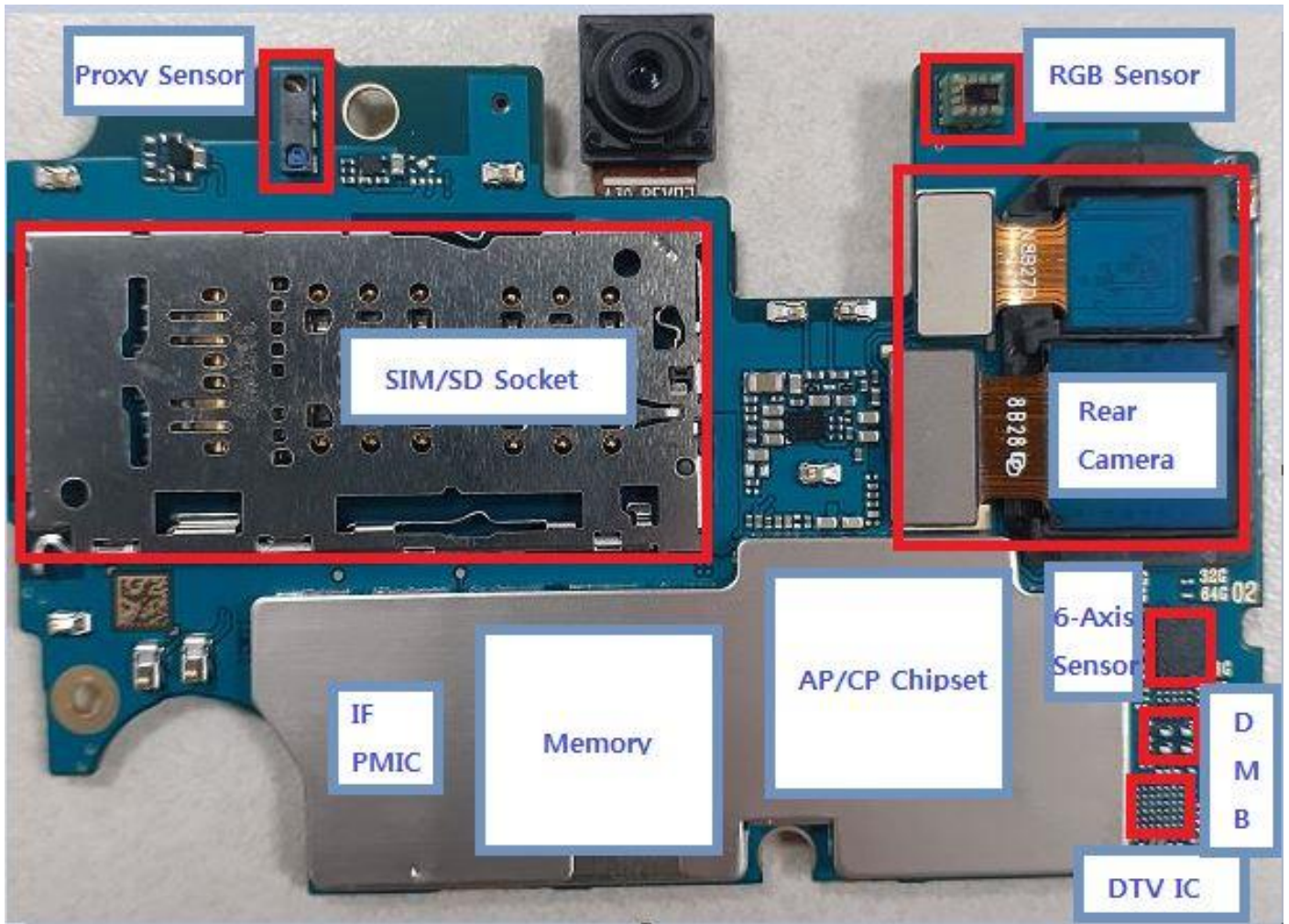
이 문서는 삼성전자의 기술 자산으로, 허가 받은 사람만 사용할 수 있습니다.

---

## 8. Level 3 Repair

---

### PBA BOT Side



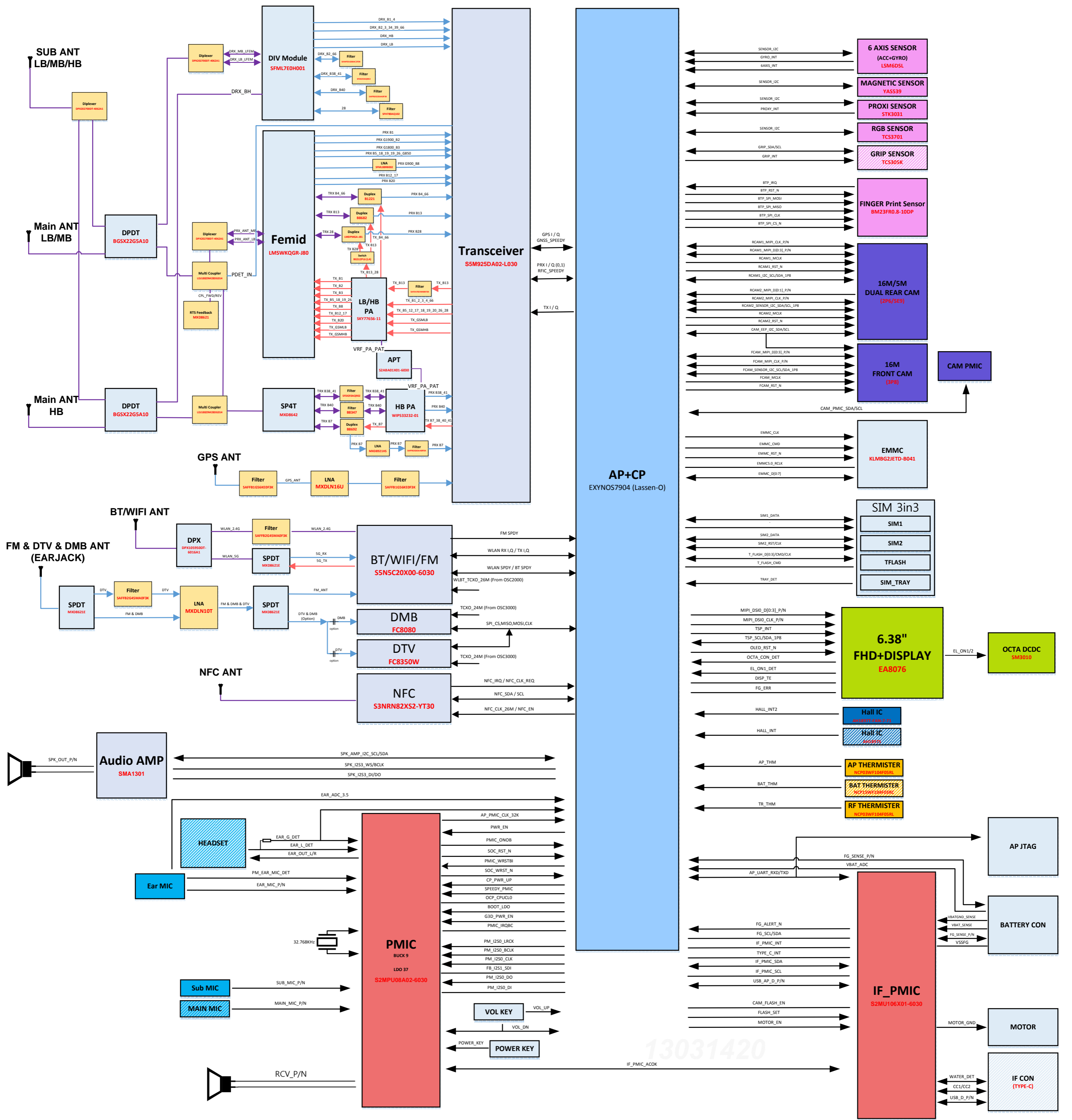
---

삼성전자주식회사

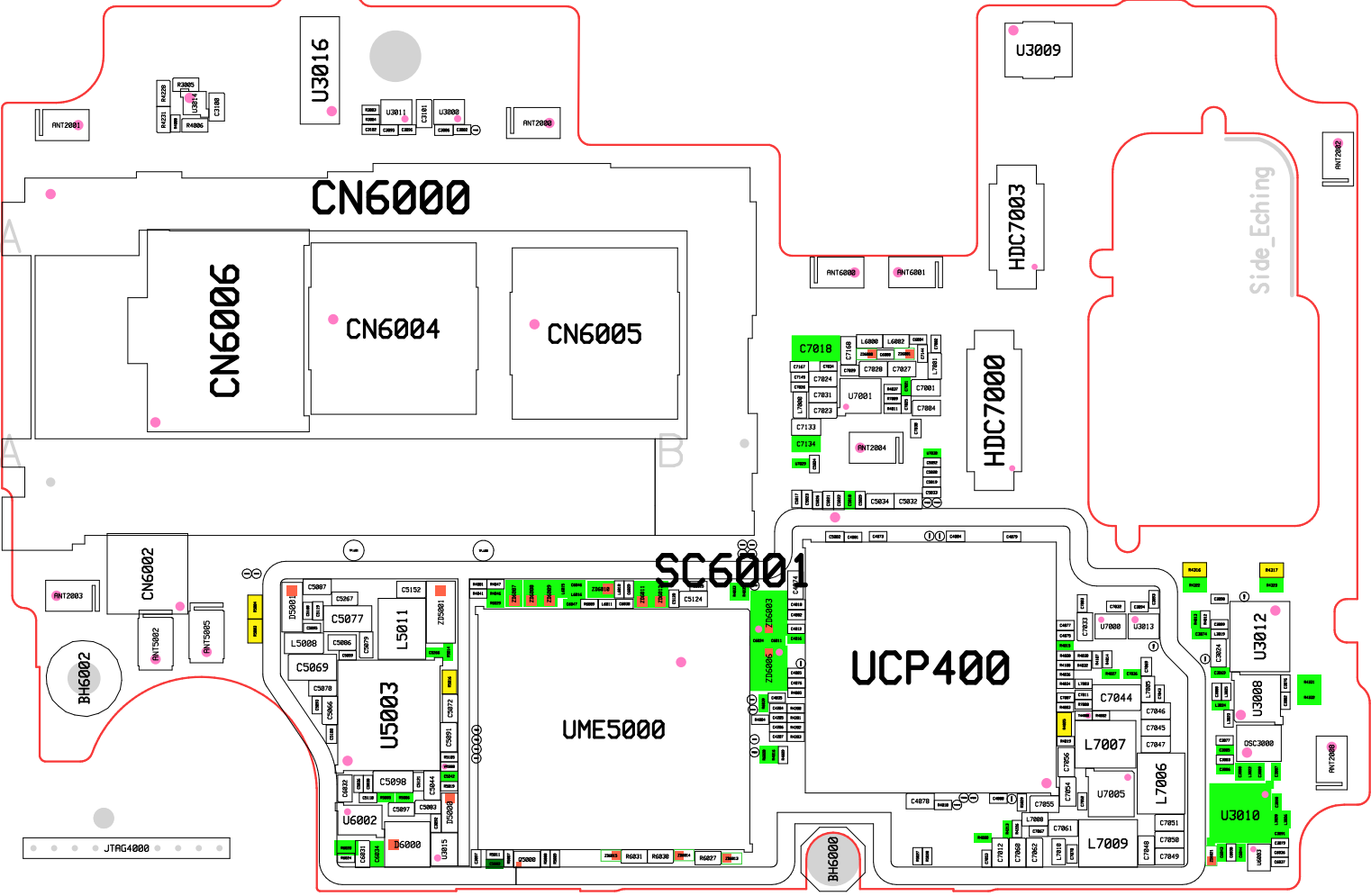
이 문서는 삼성전자의 기술 자산으로, 허가 받은 사람만 사용할 수 있습니다.

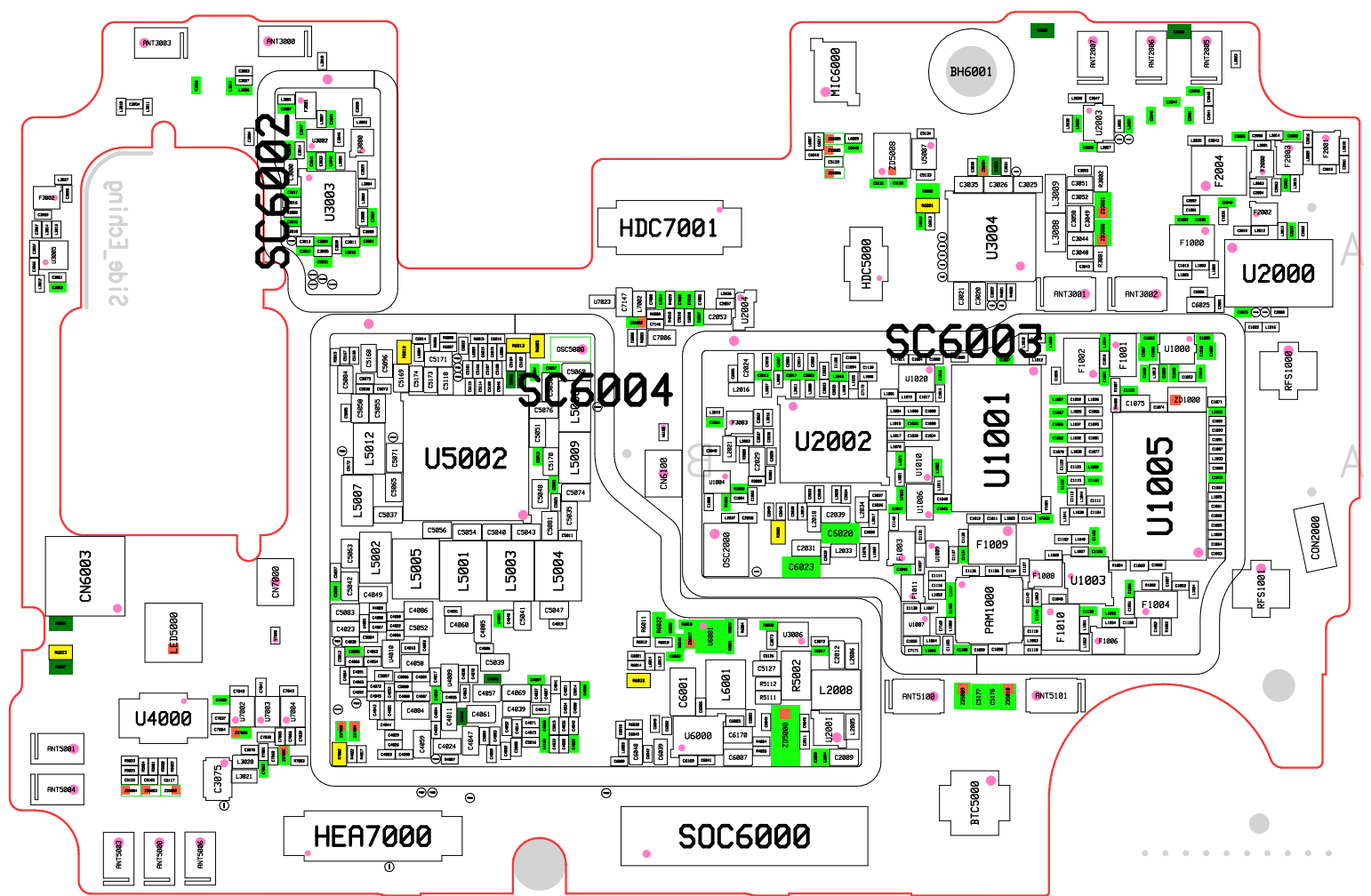
# A30 Block Diagram

Date : 2018.11.22  
H/W REV : 0.0



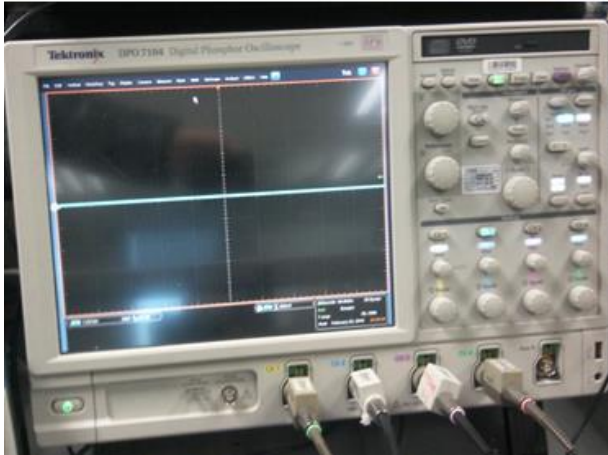
13031420





## 8. Level 3 Repair

### 8-3. Flow chart of Troubleshooting.



Oscilloscope



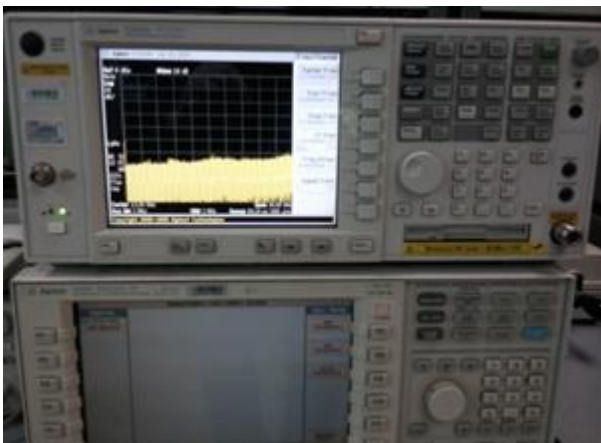
Digital Multimeter



Power Supply



+ driver, ESD Safe Tweezer



8960 & Spectrum Analyzer



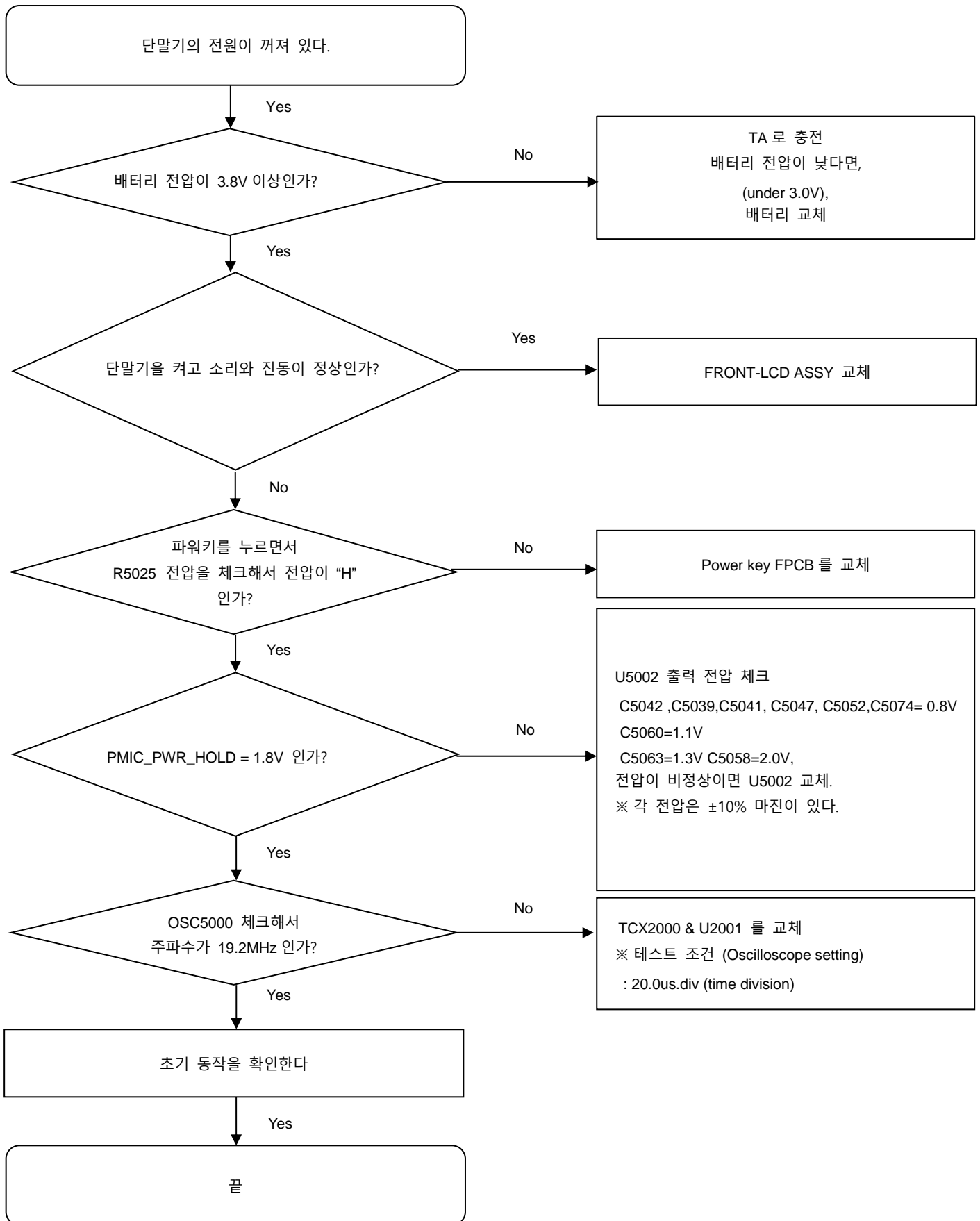
Soldering iron

삼성전자주식회사

이 문서는 삼성전자의 기술 자산으로, 허가 받은 사람만 사용할 수 있습니다.

## 8. Level 3 Repair

### 8-4-1. Power on



삼성전자주식회사

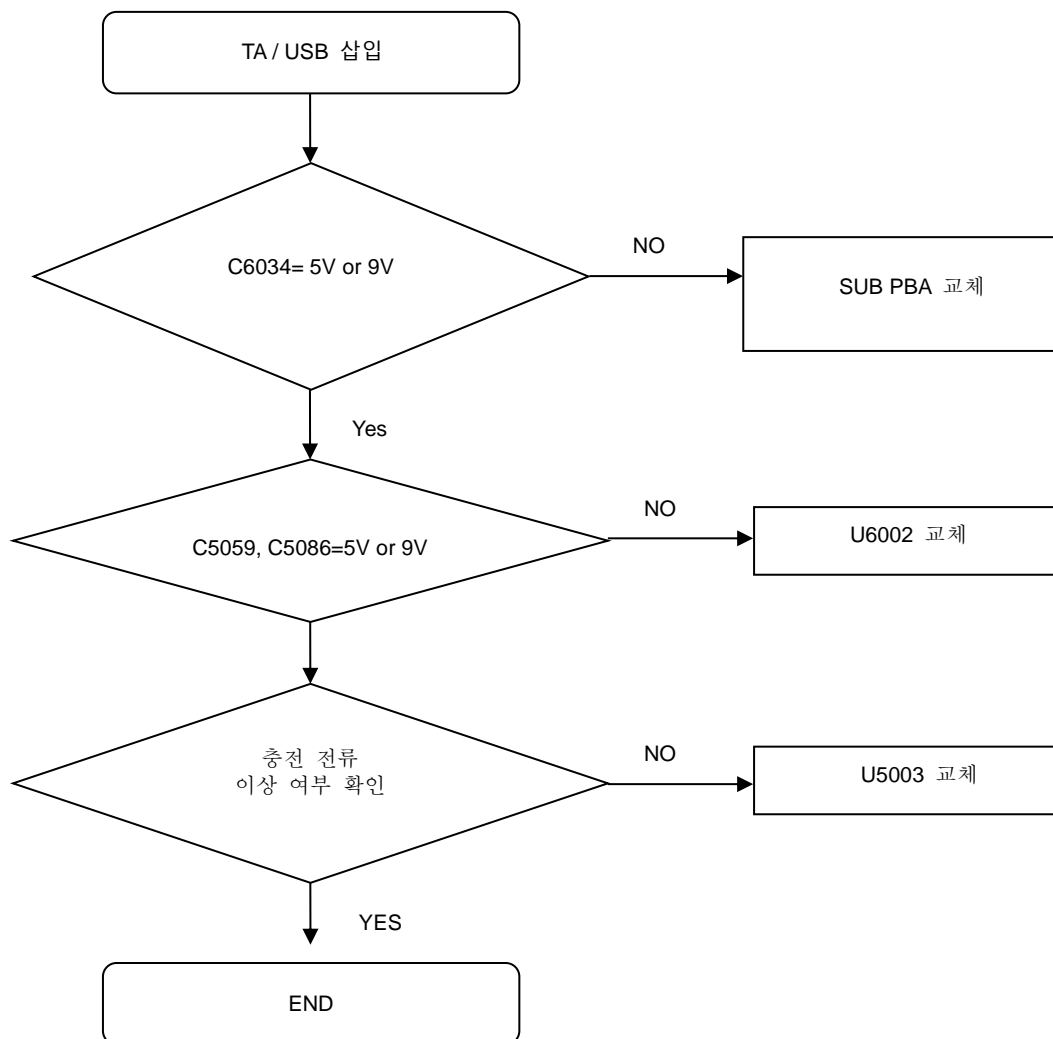
이 문서는 삼성전자의 기술 자산으로, 허가 받은 사람만 사용할 수 있습니다.

---

## 8. Level 3 Repair

---

### 8-4-2. 충전 Part



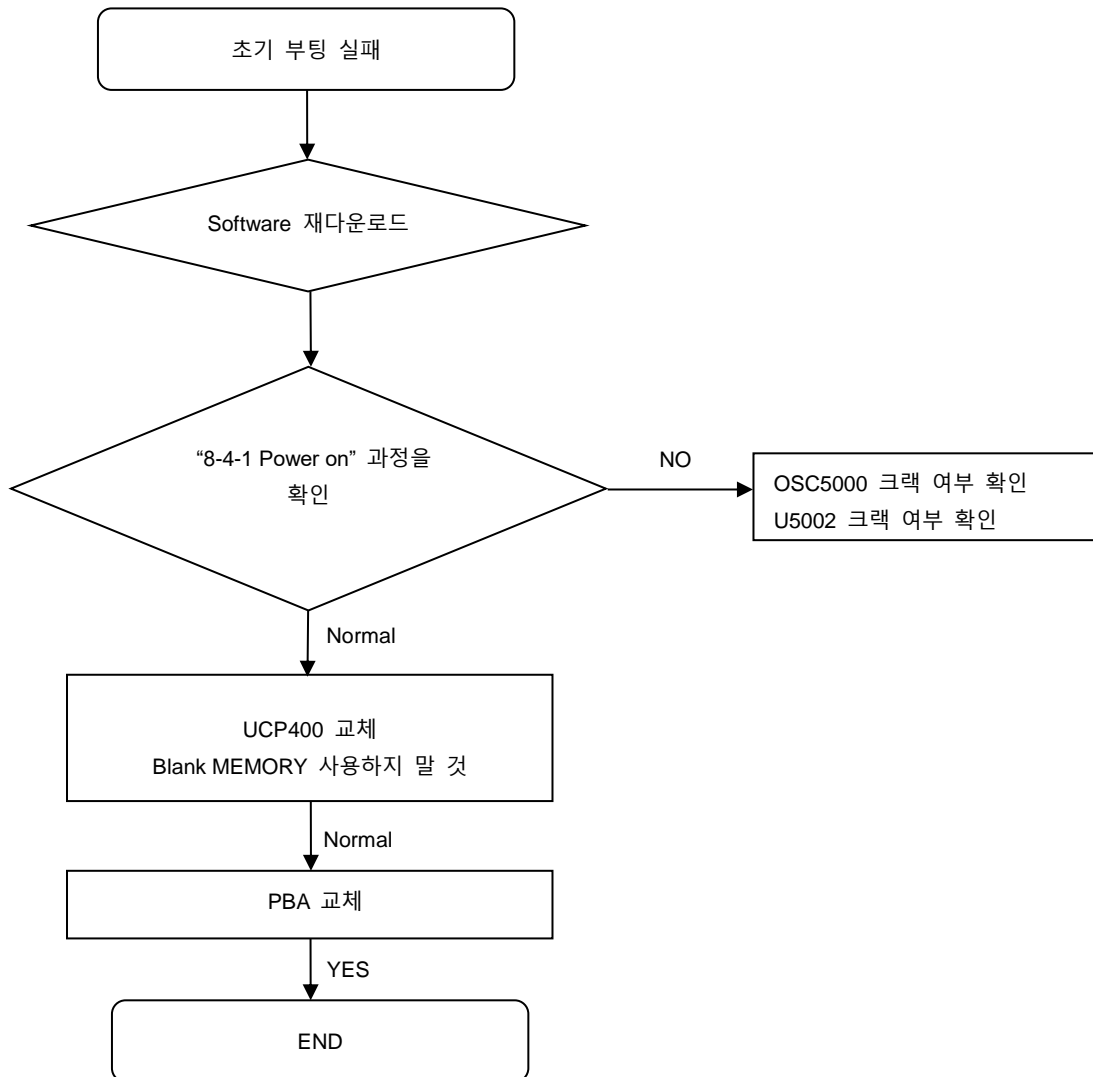


---

## 8. Level 3 Repair

---

### 8-4-3. 부팅

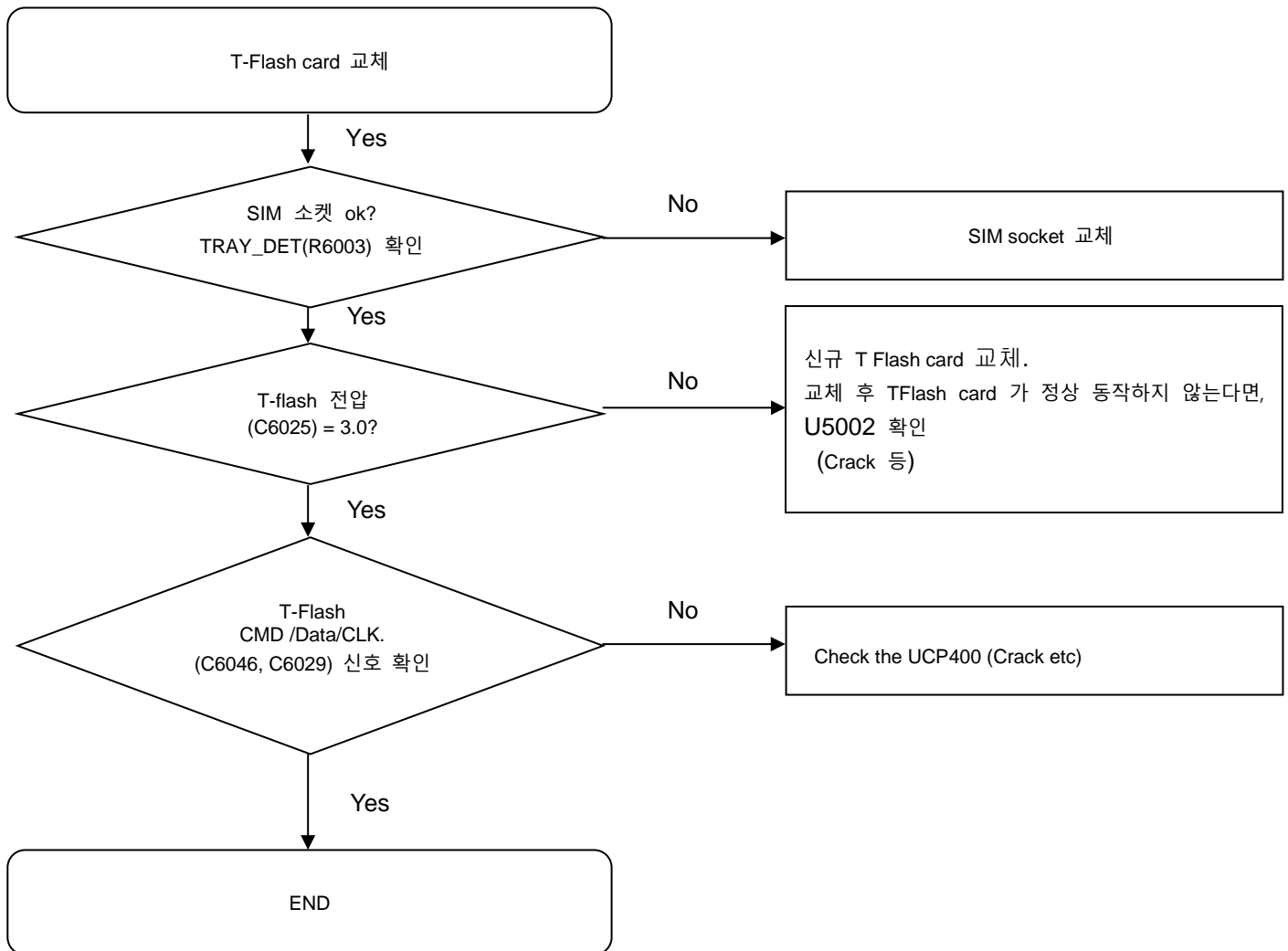


---

## 8. Level 3 Repair

---

### 8-4-4. T-Flash Part

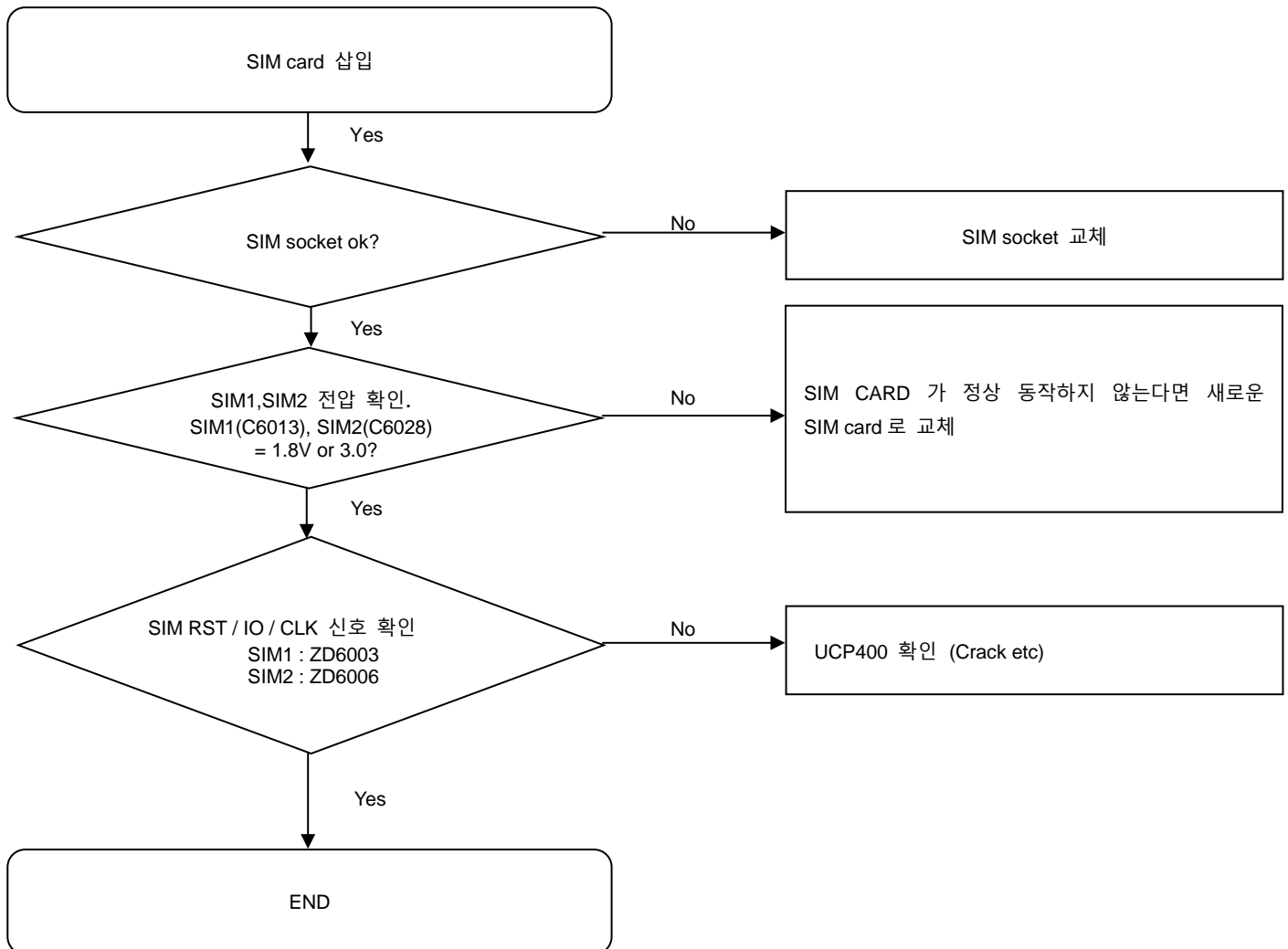


---

## 8. Level 3 Repair

---

### 8-4-5. SIM PART

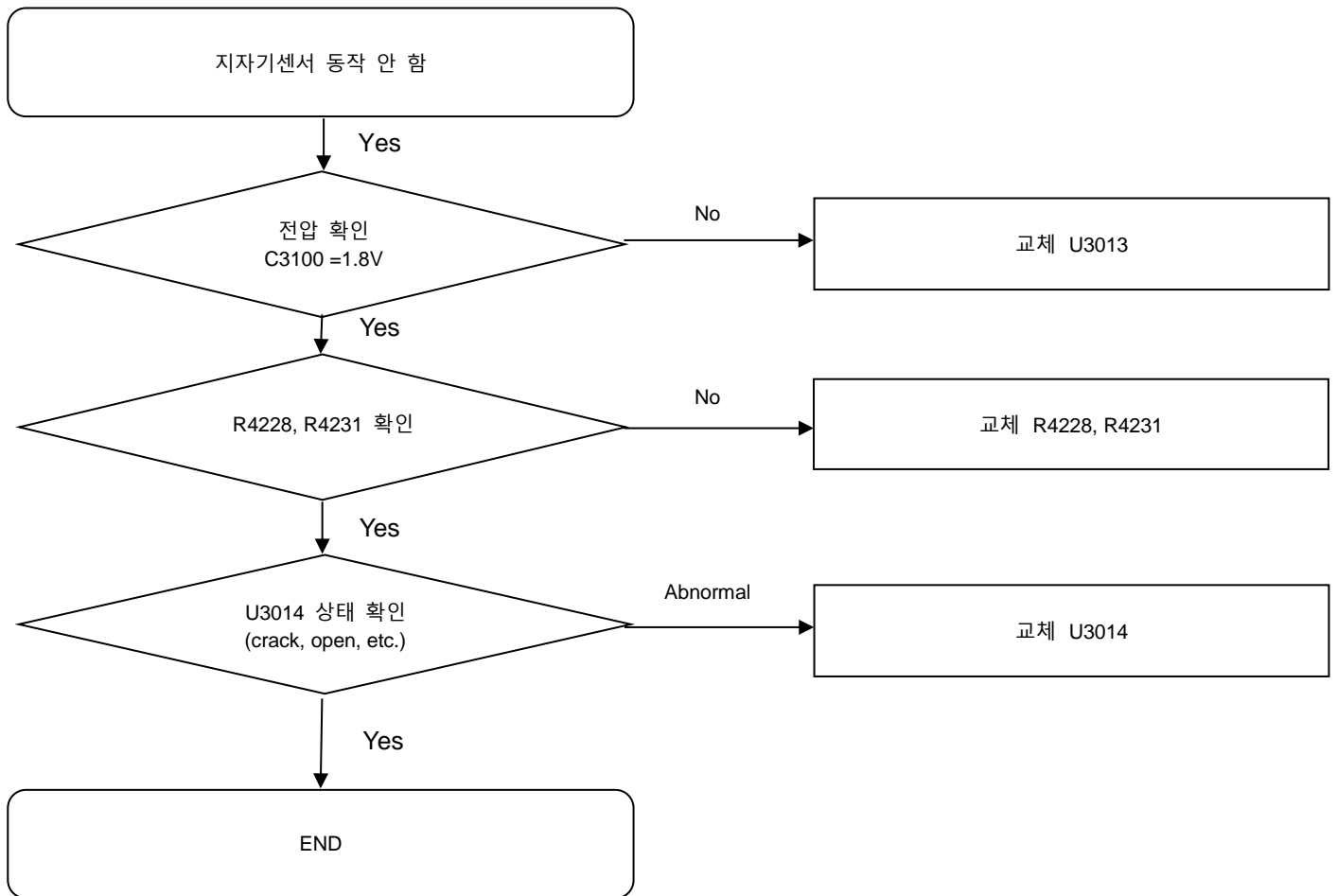


---

## 8. Level 3 Repair

---

### 8-4-6-1. 지자기 Sensor

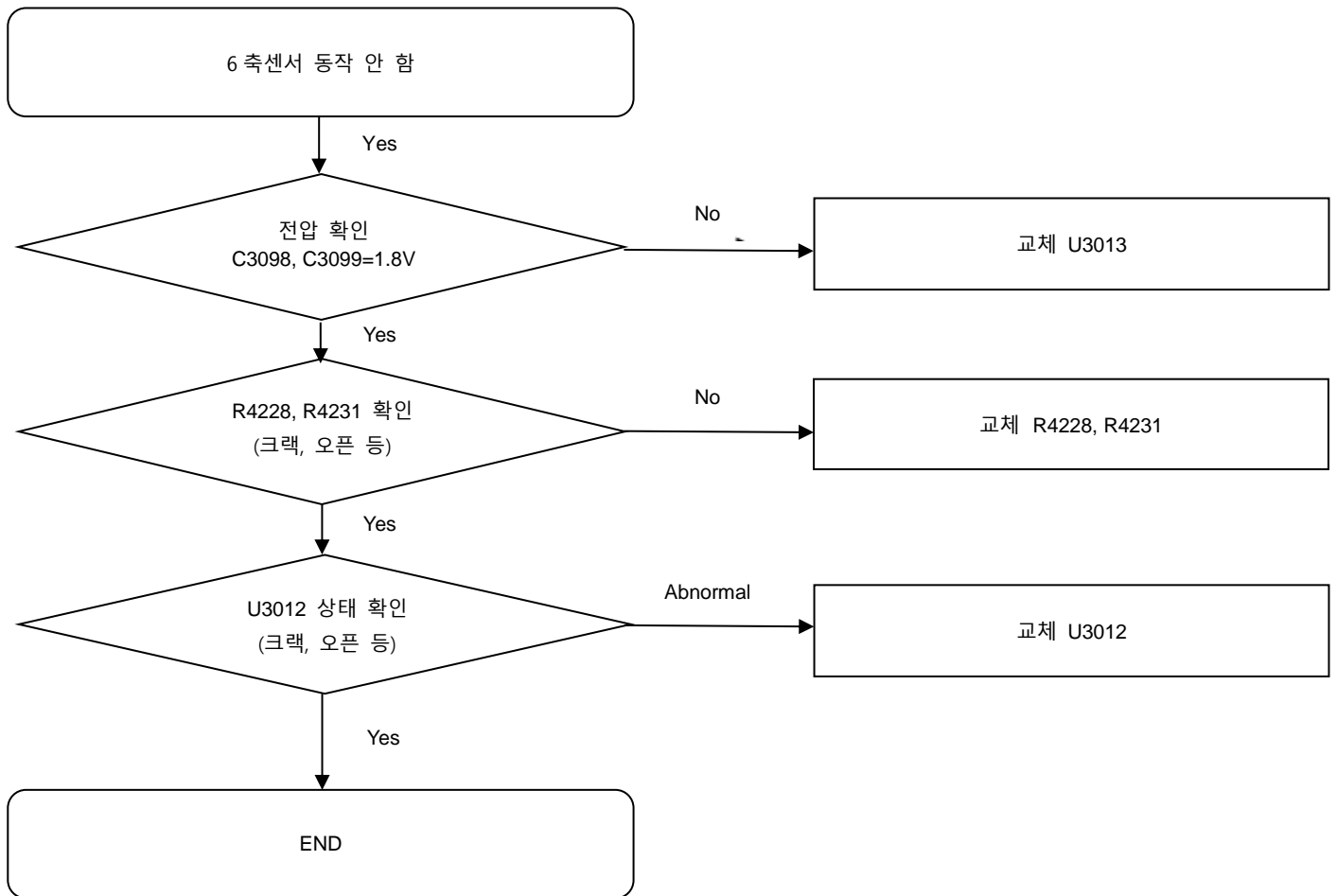


---

## 8. Level 3 Repair

---

### 8-4-6-2. 6 축 Sensor

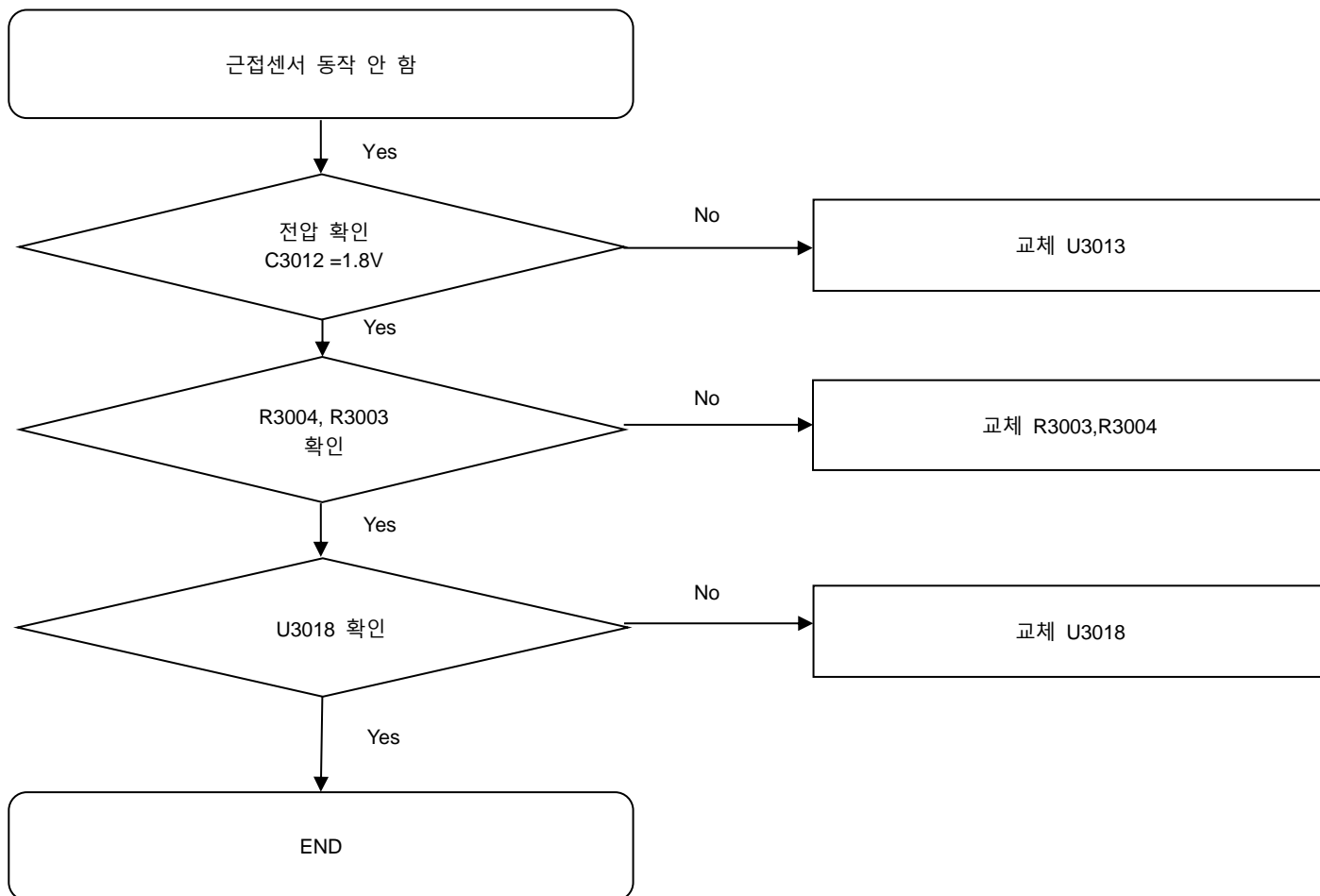


---

## 8. Level 3 Repair

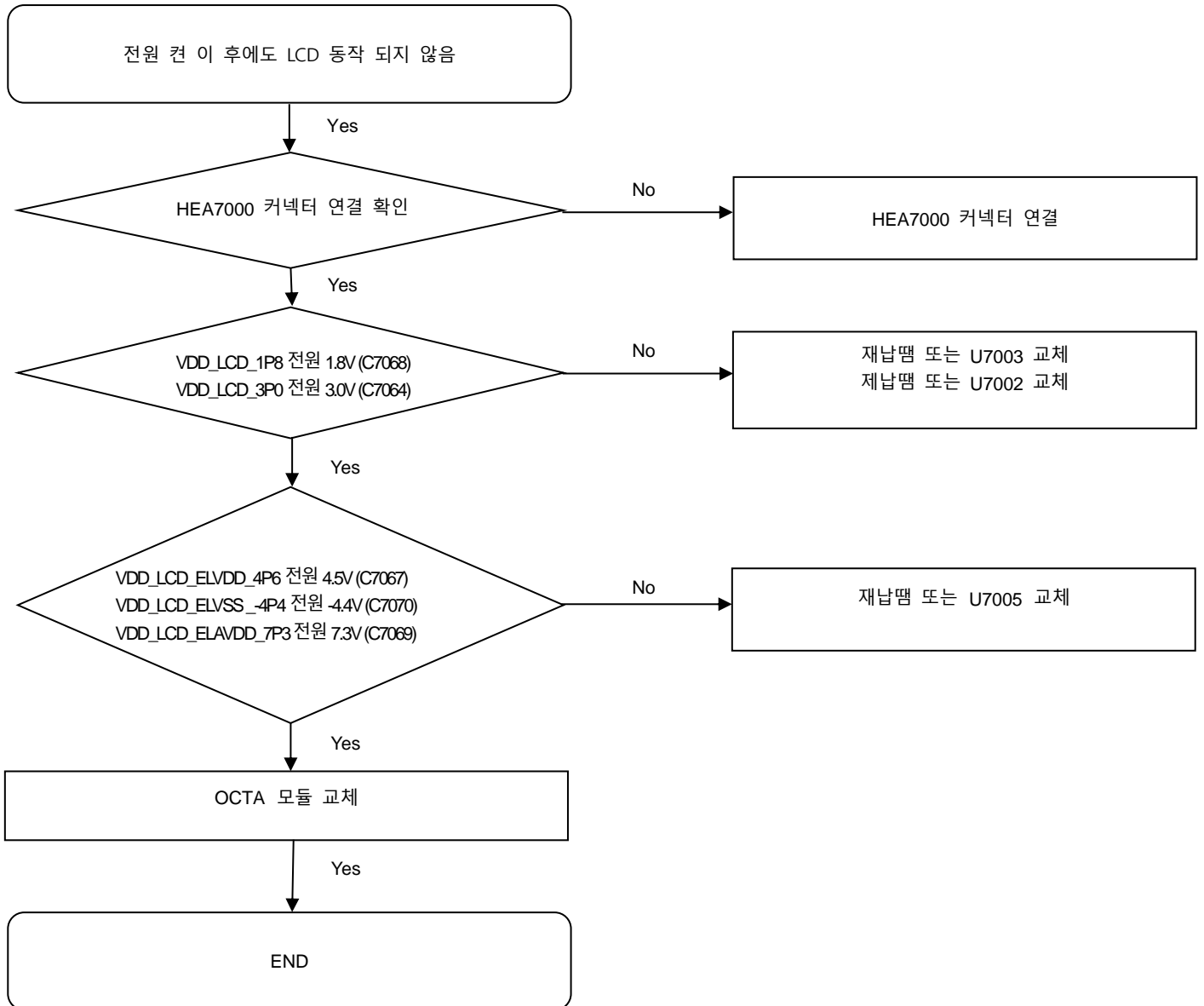
---

### 8-4-6-3. 근접 sensor



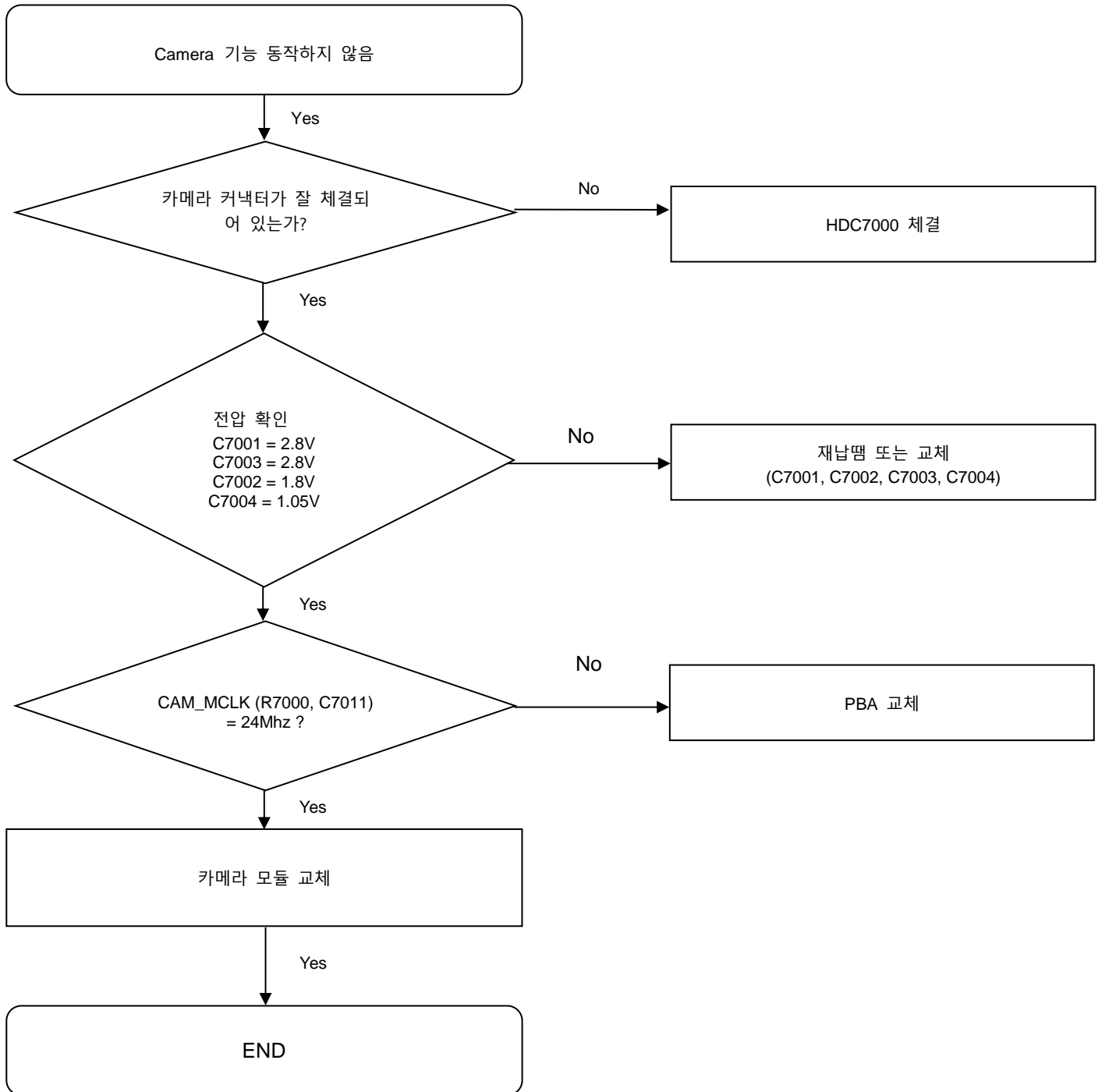
## 8. Level 3 Repair

### 8-4-7. OCTA



## 8. Level 3 Repair

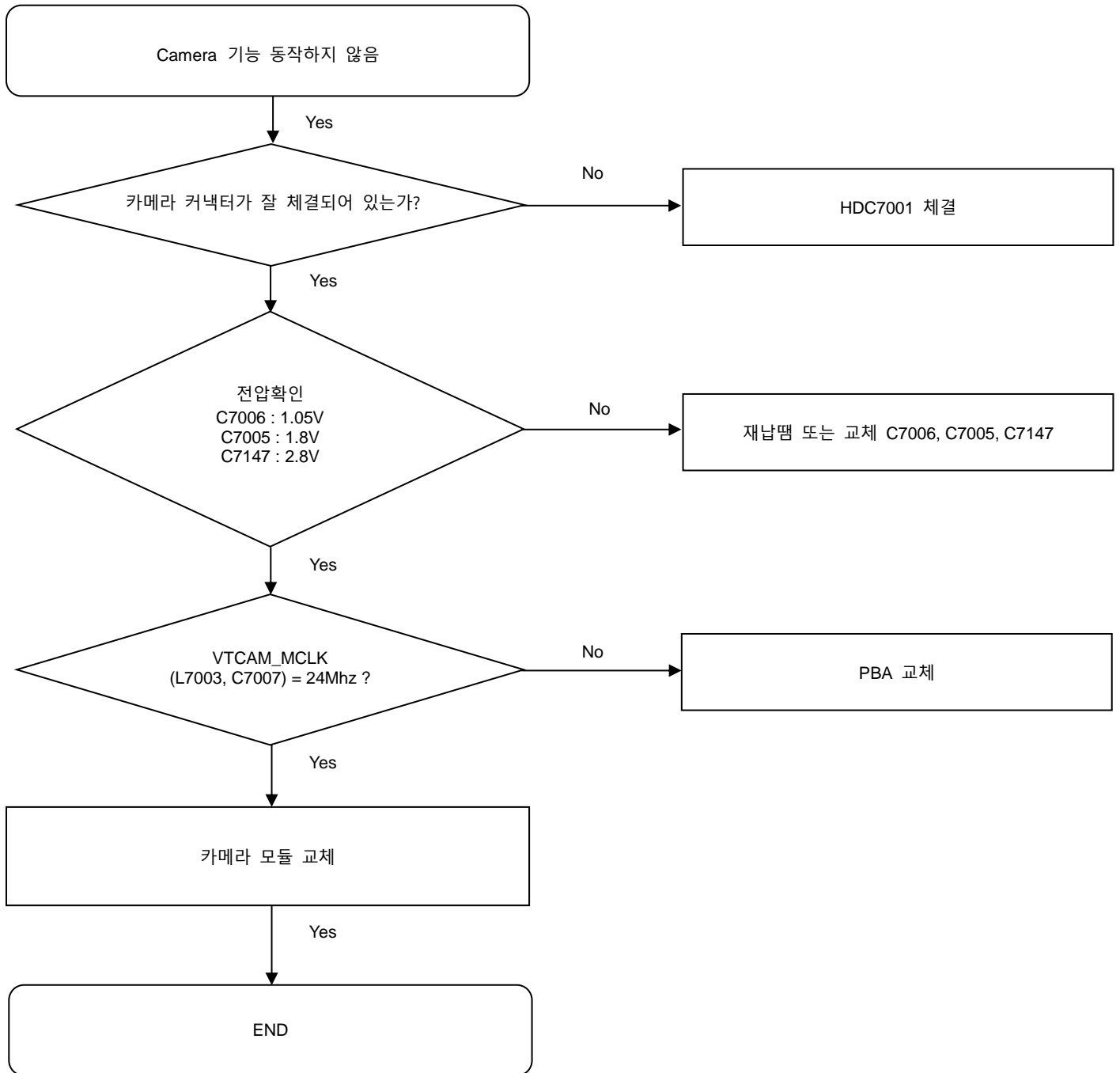
### 8-4-8. 16M AF 후면 CAMERA





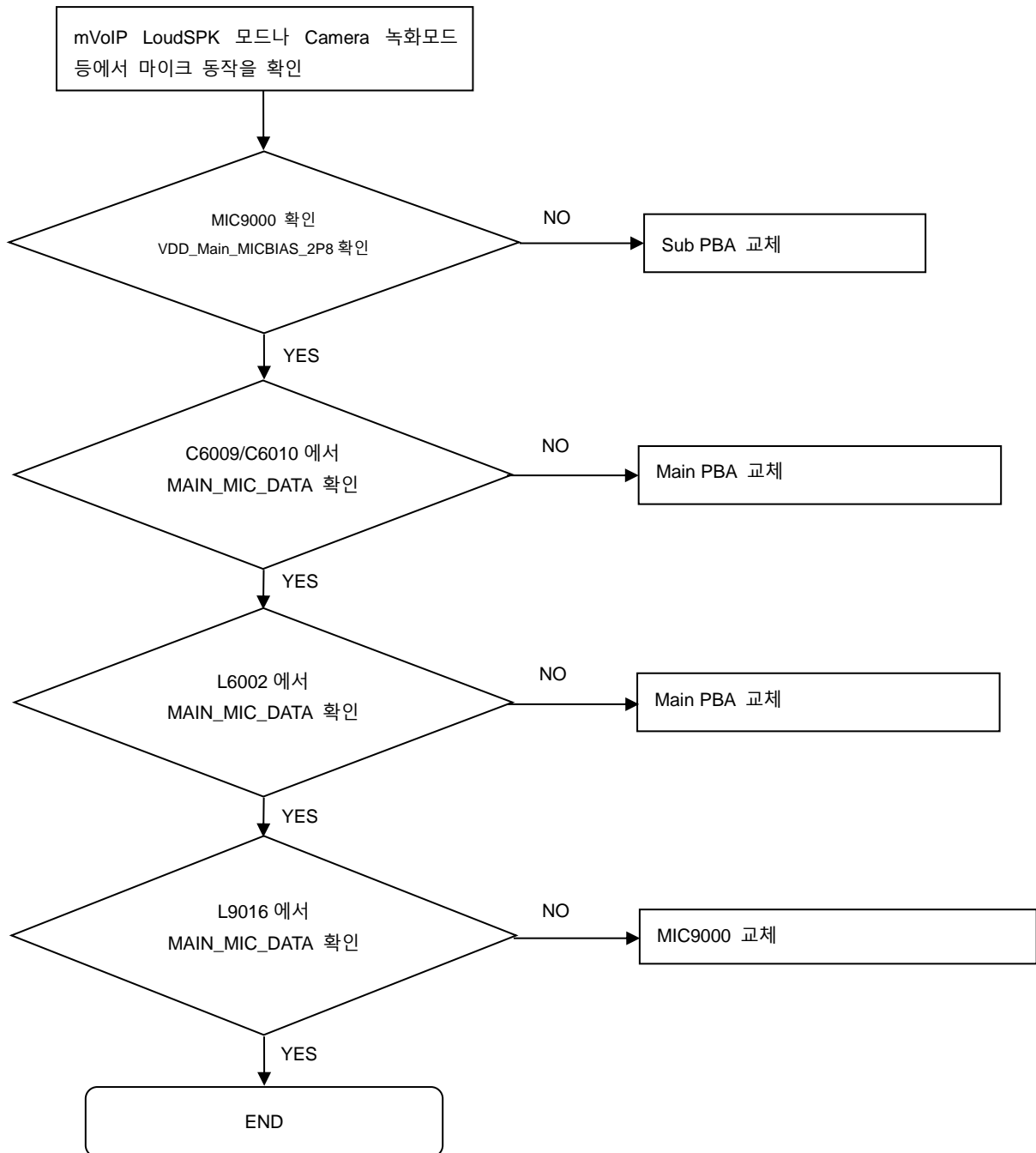
## 8. Level 3 Repair

### 8-4-9. 16M FF 전면 CAMERA



## 8. Level 3 Repair

### 8-4-10. Microphone Part – Main MIC

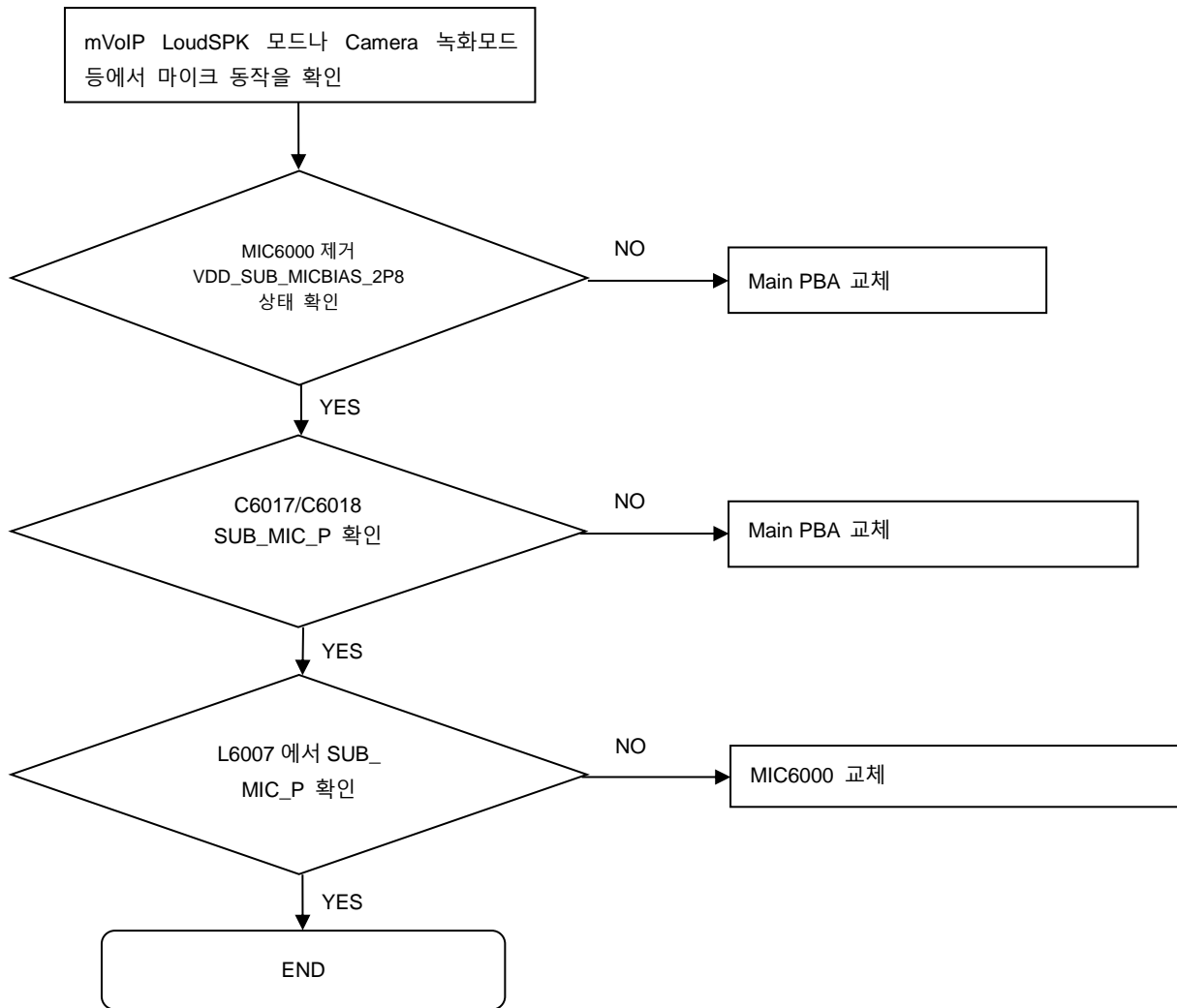


---

## 8. Level 3 Repair

---

### 8-4-11. Microphone Part – SUB MIC

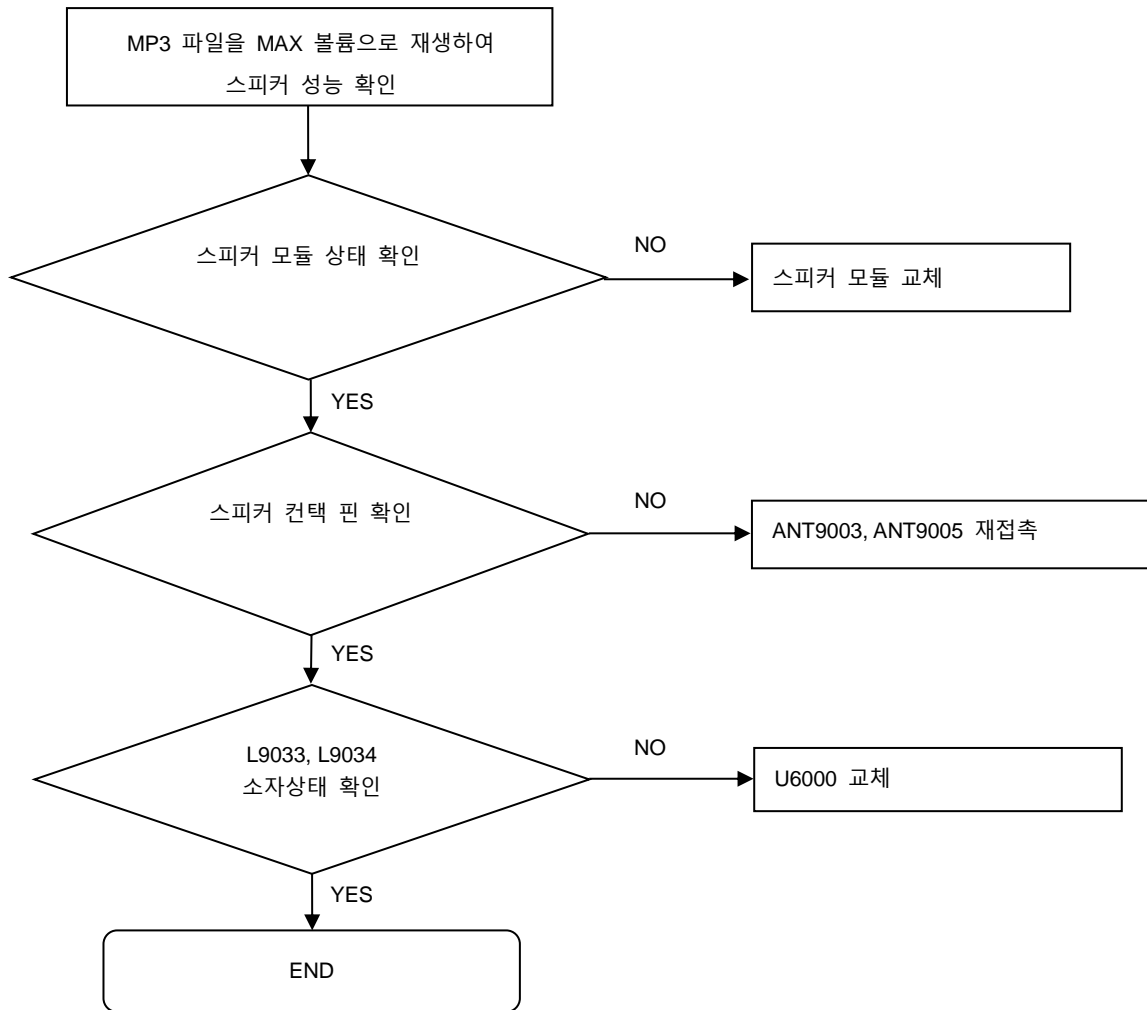


---

## 8. Level 3 Repair

---

### 8-4-12. Speaker part

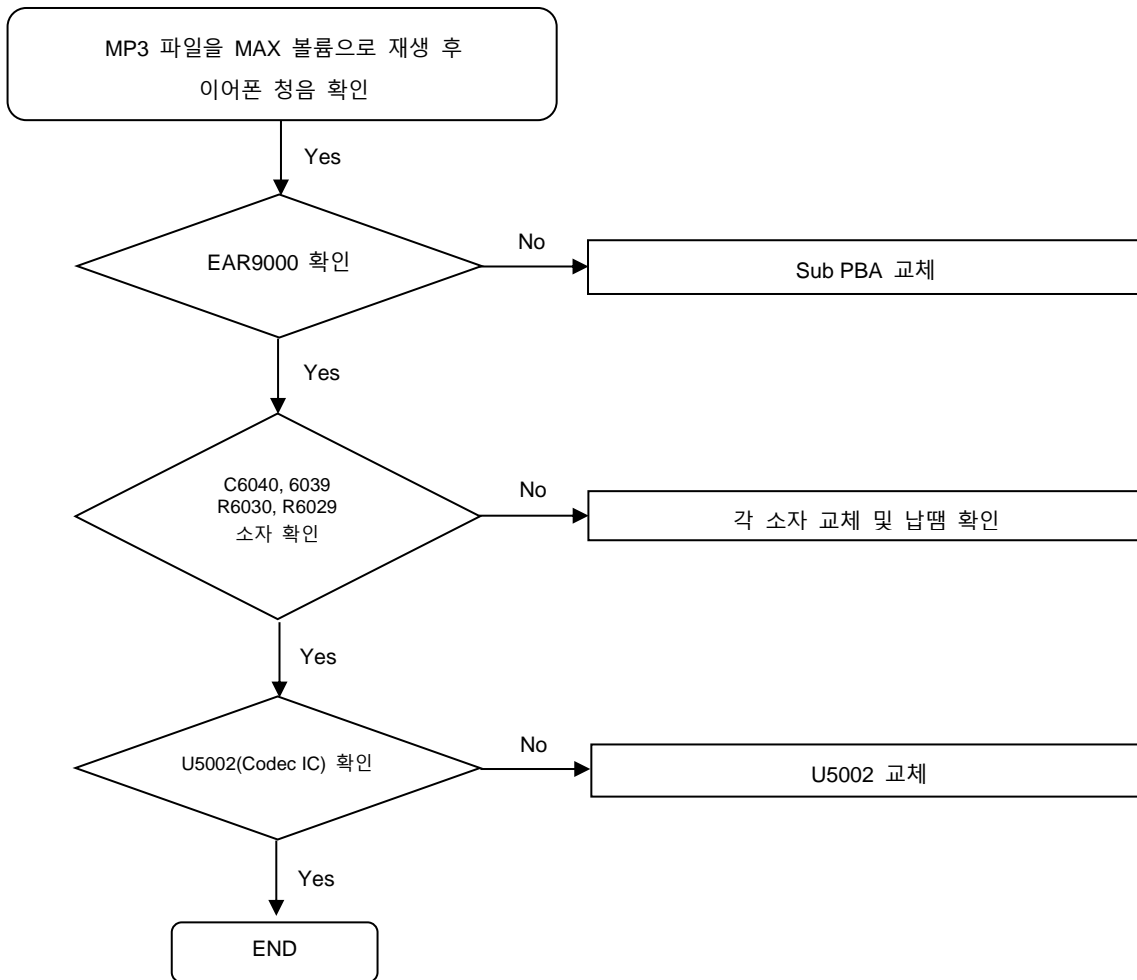


---

## 8. Level 3 Repair

---

### 8-4-13. Earjack Part - Rx

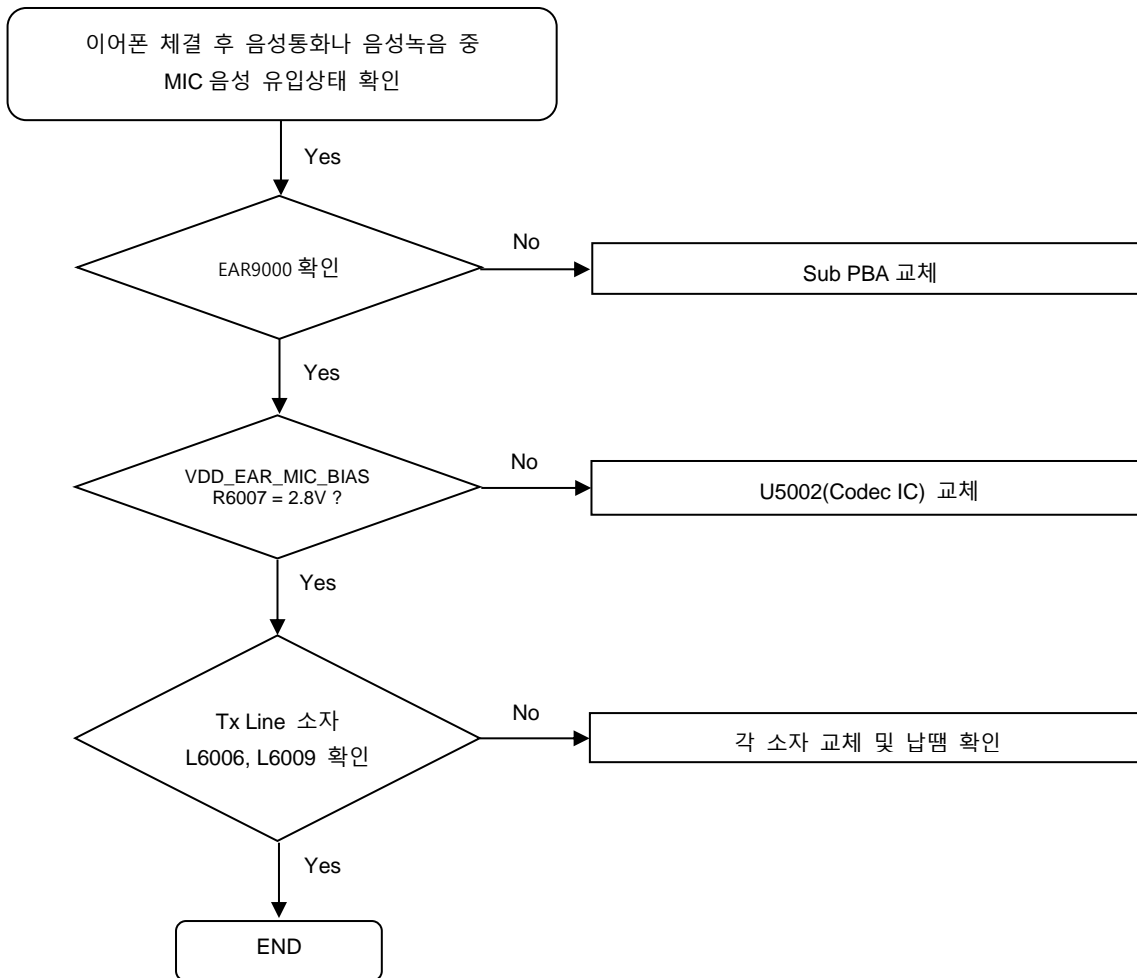


---

## 8. Level 3 Repair

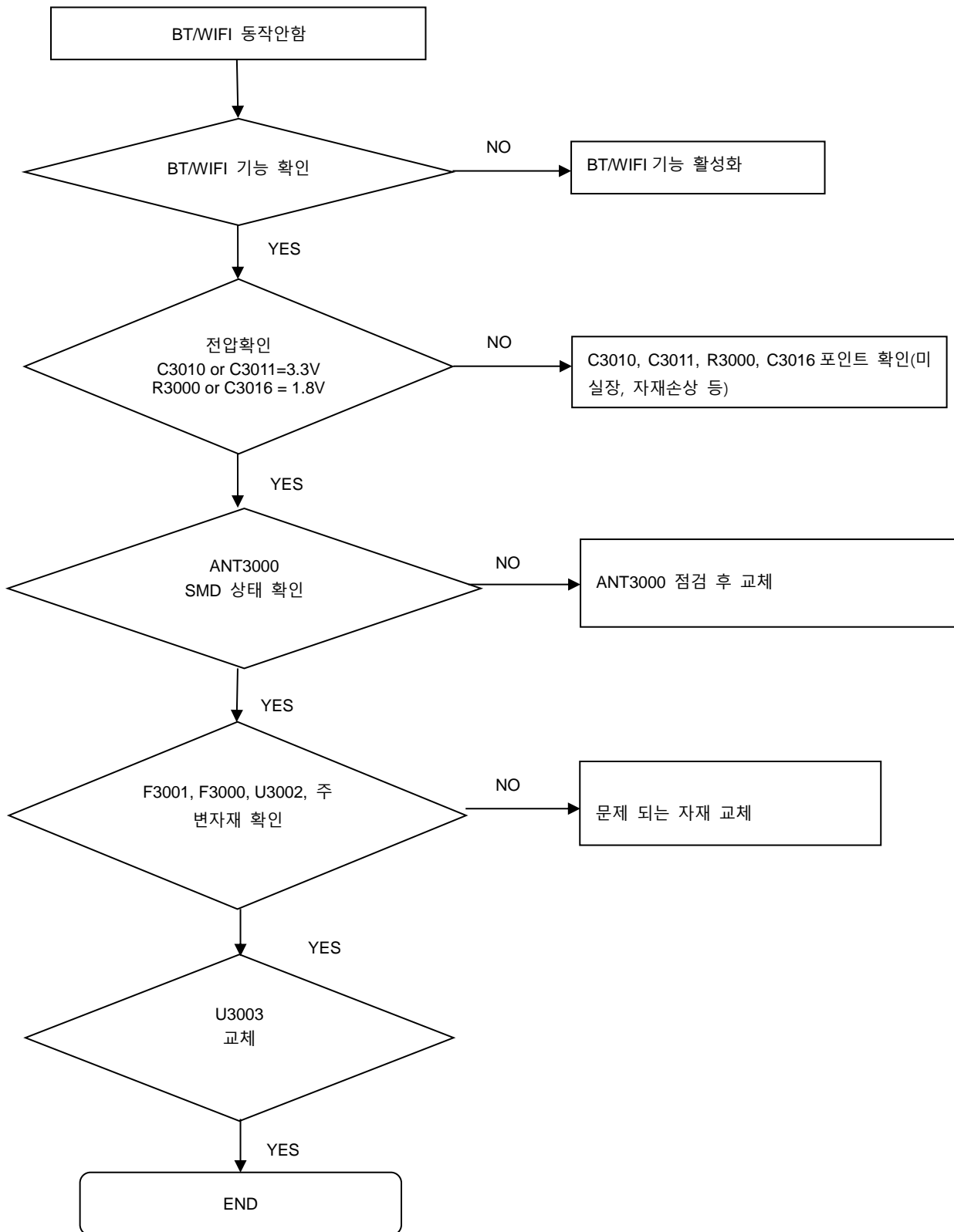
---

### 8-4-14. Earjack Part - Tx



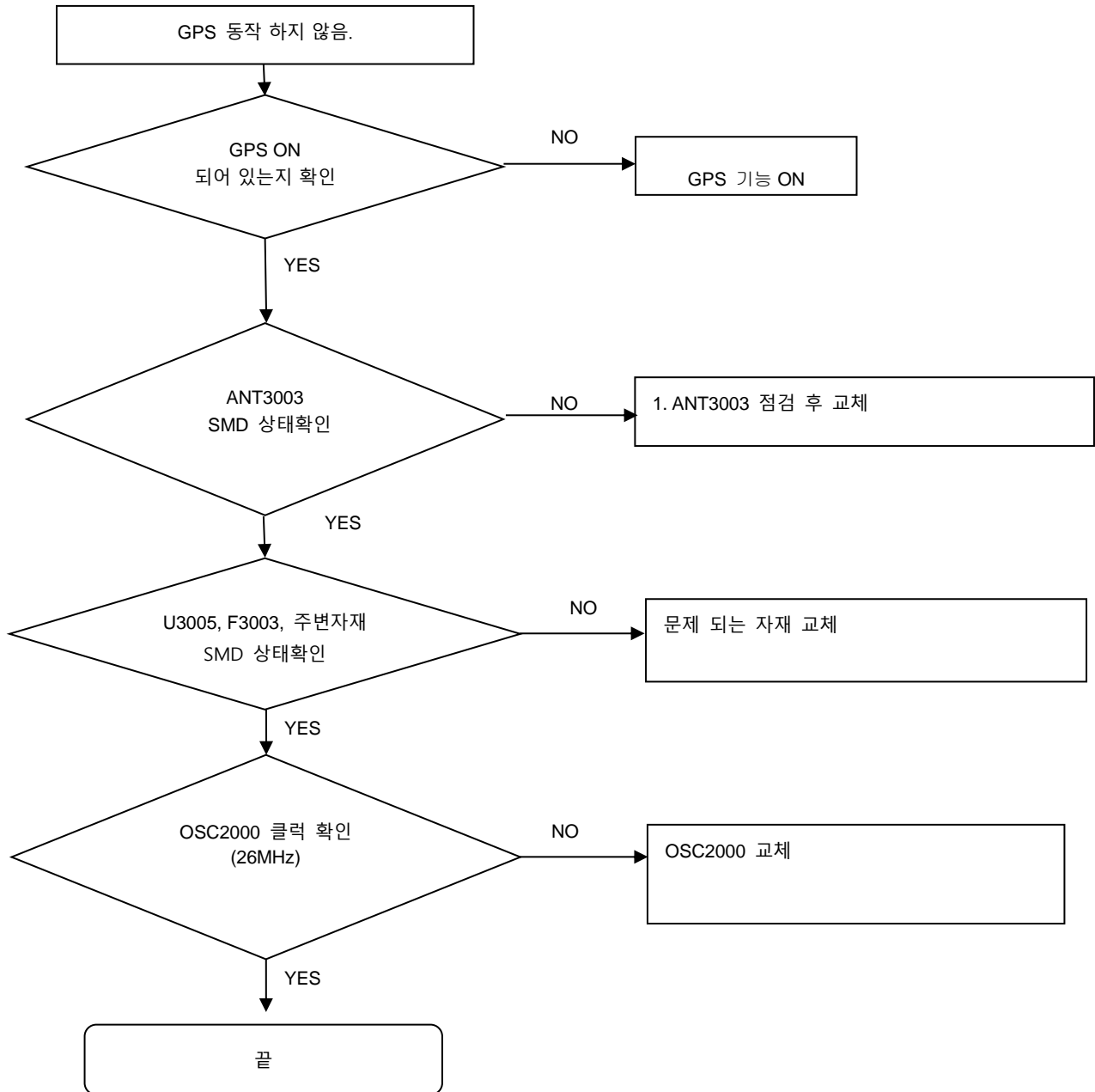
## 8. Level 3 Repair

### 8-4-15. BT/WIFI part



## 8. Level 3 Repair

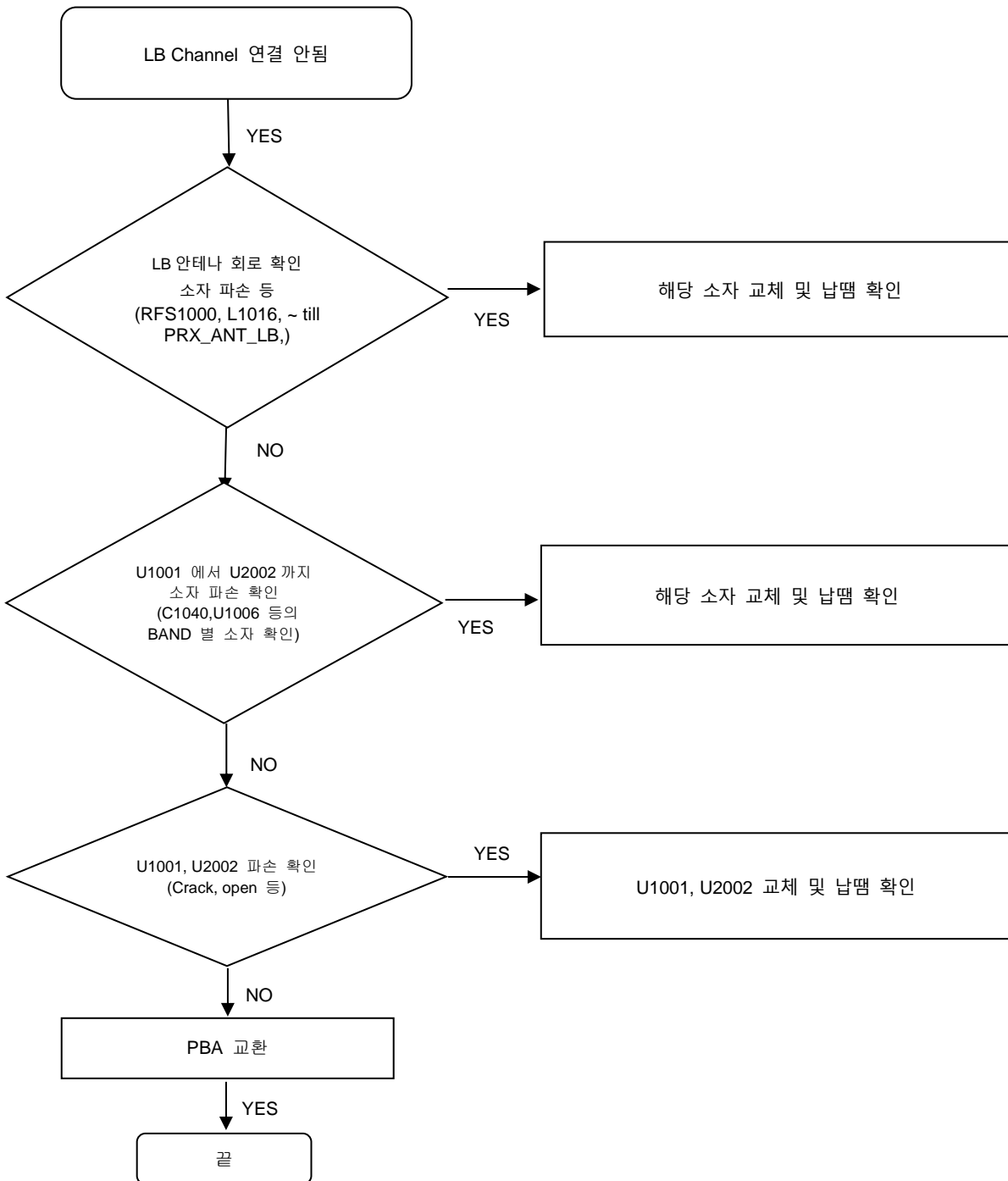
### 8-4-16. GPS part





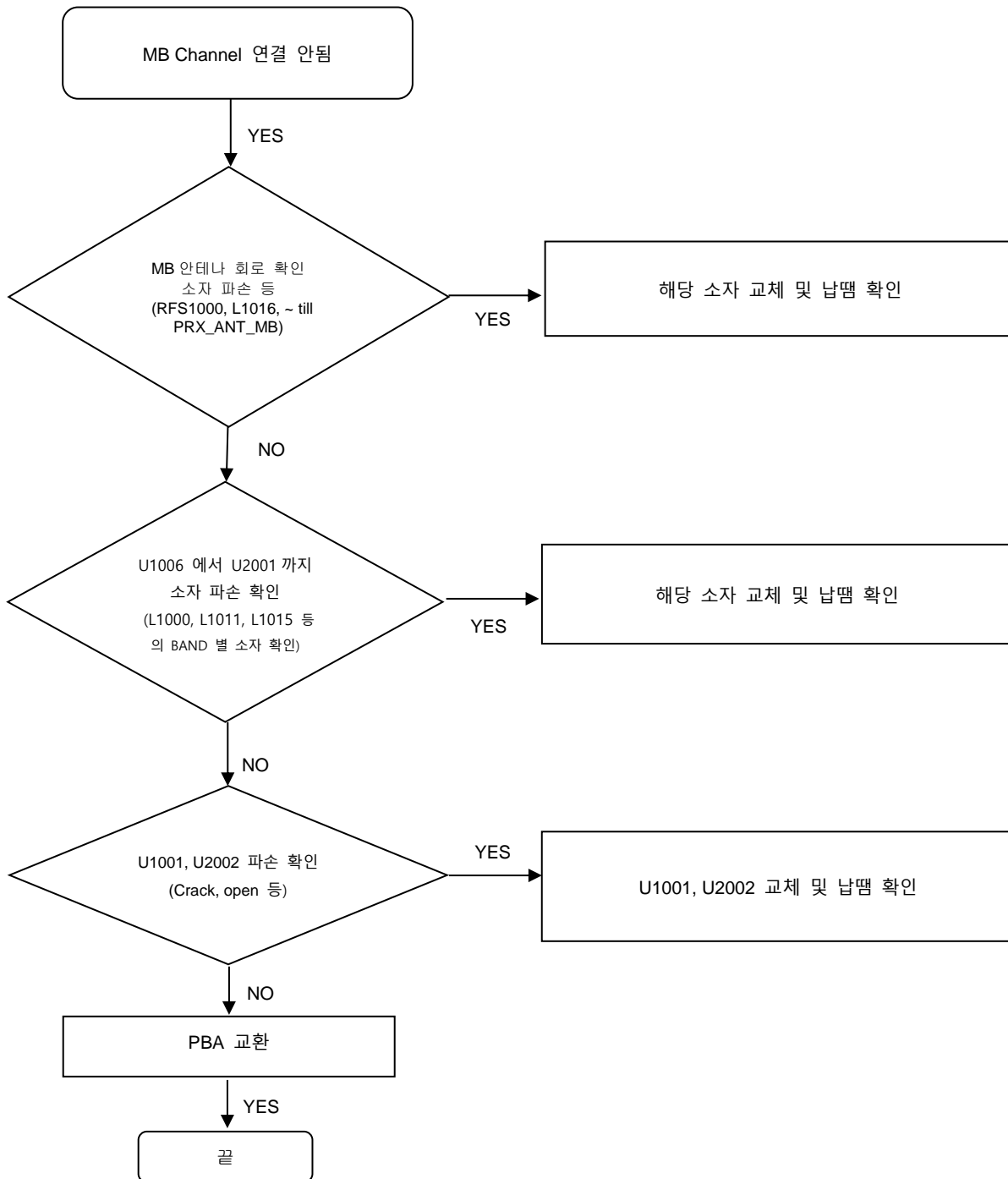
## 8. Level 3 Repair

### 8-4-17. LOW BAND RX (GSM850, 900, W5, 8 LTE5, 8, 17, 20, 28)



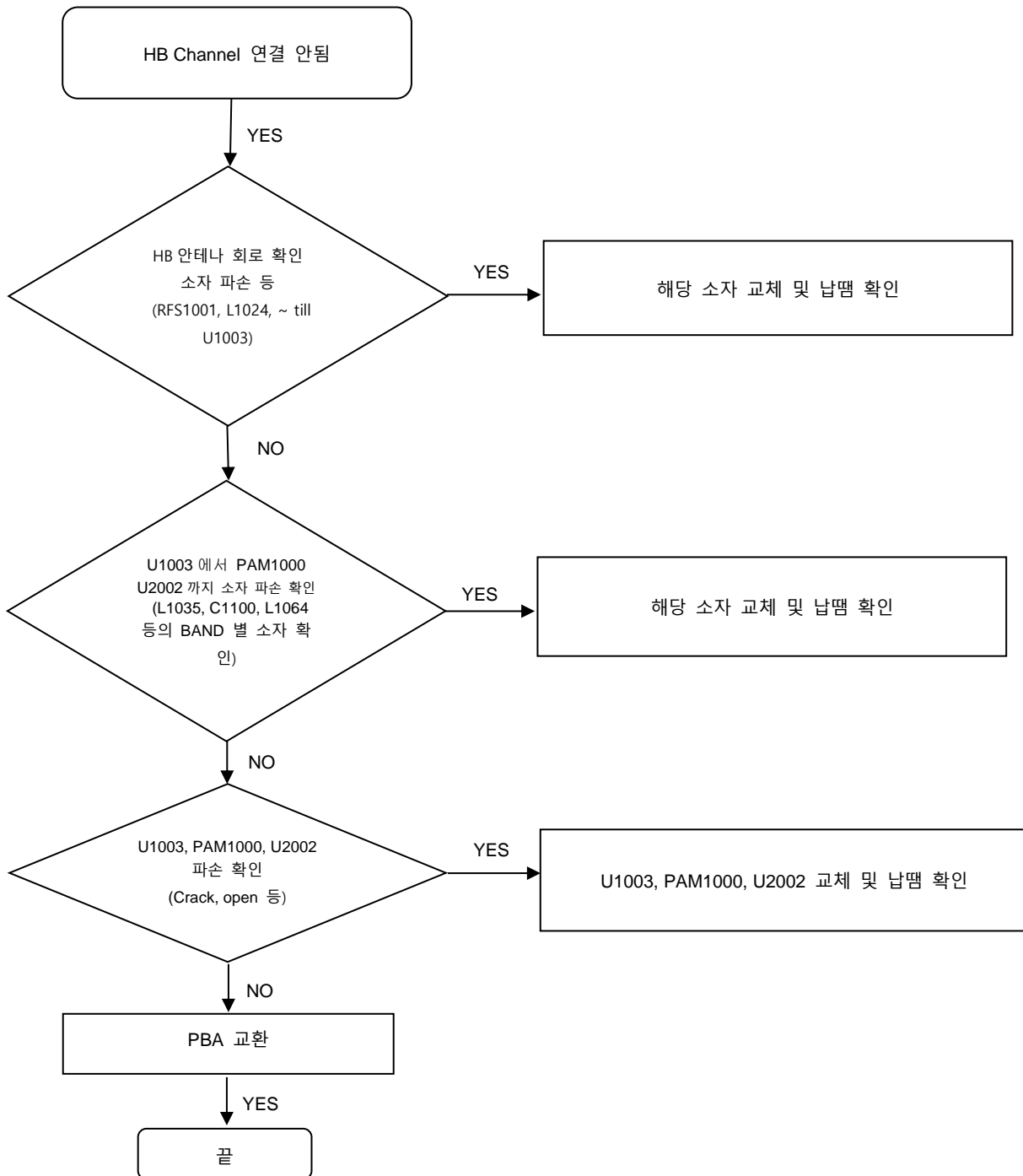
## 8. Level 3 Repair

### 8-4-18. MID BAND RX (DCS, PCS, W1, W2, LTE 1,3)



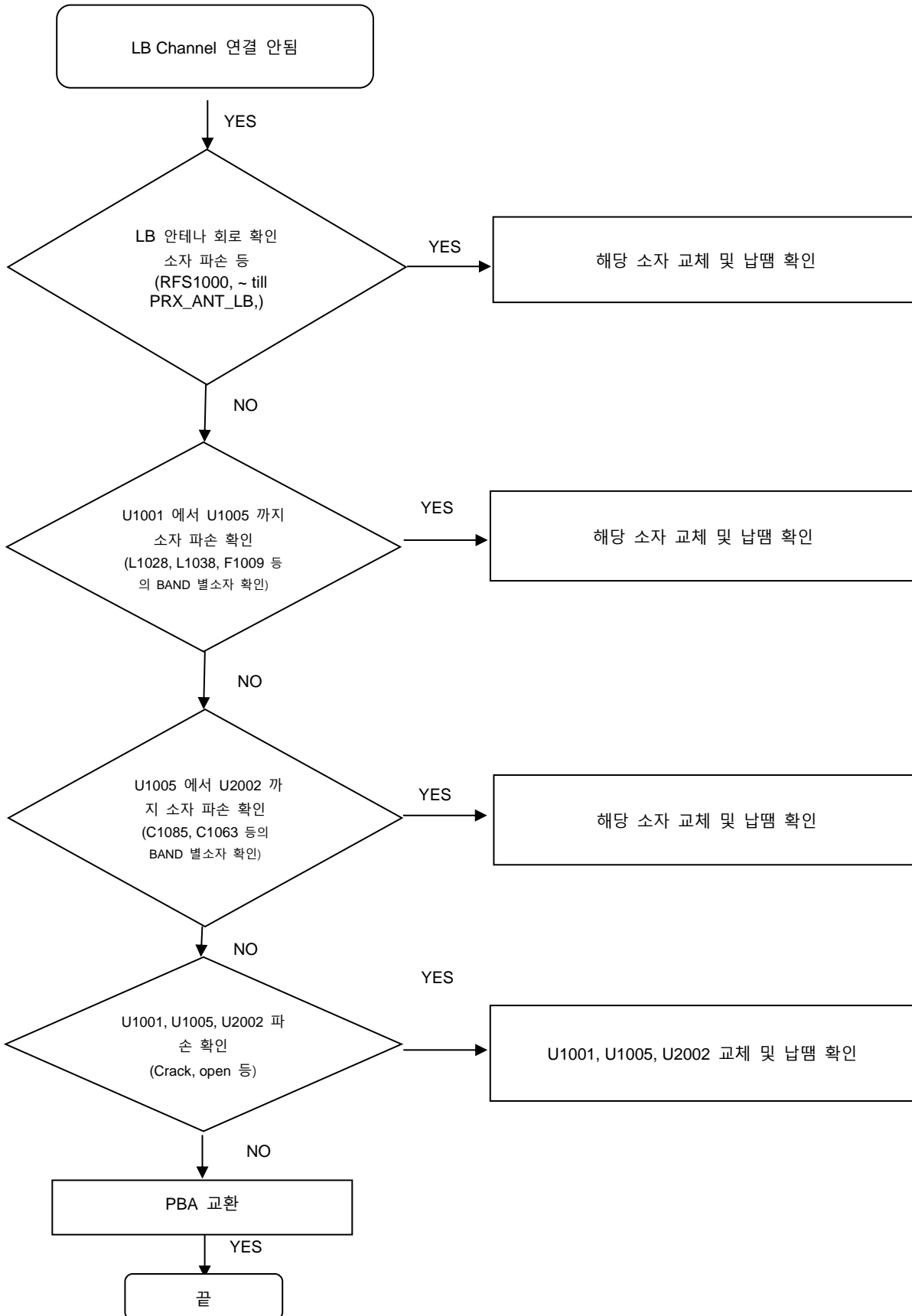
## 8. Level 3 Repair

### 8-4-19. HIGH BAND RX (LTE 7,38,40,41)



## 8. Level 3 Repair

### 8-4-20. LOW BAND TX (GSM850,900, W5,8 LTE5, 8, 17, 20, 28)

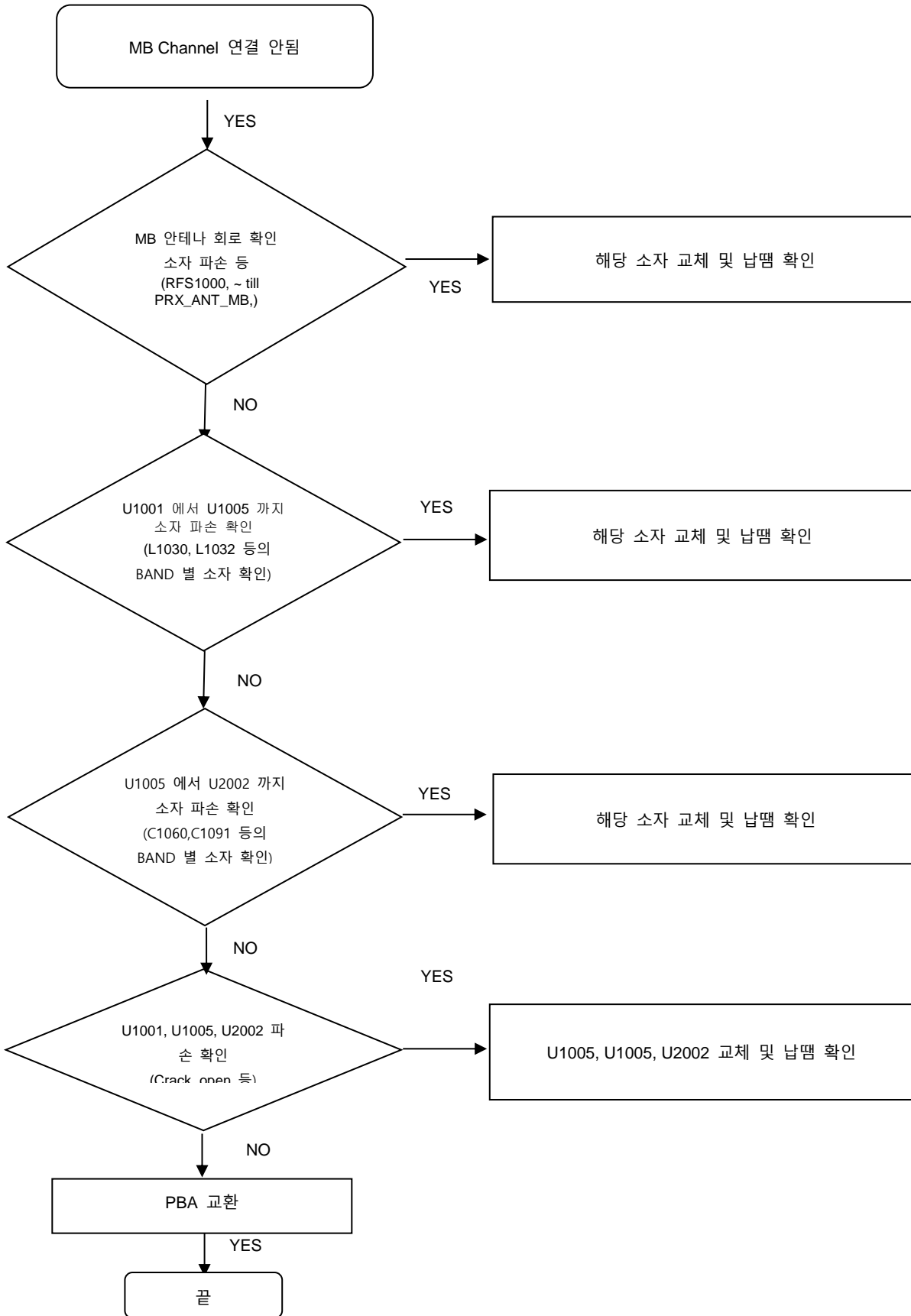


삼성전자주식회사

이 문서는 삼성전자의 기술 자산으로, 허가 받은 사람만 사용할 수 있습니다.

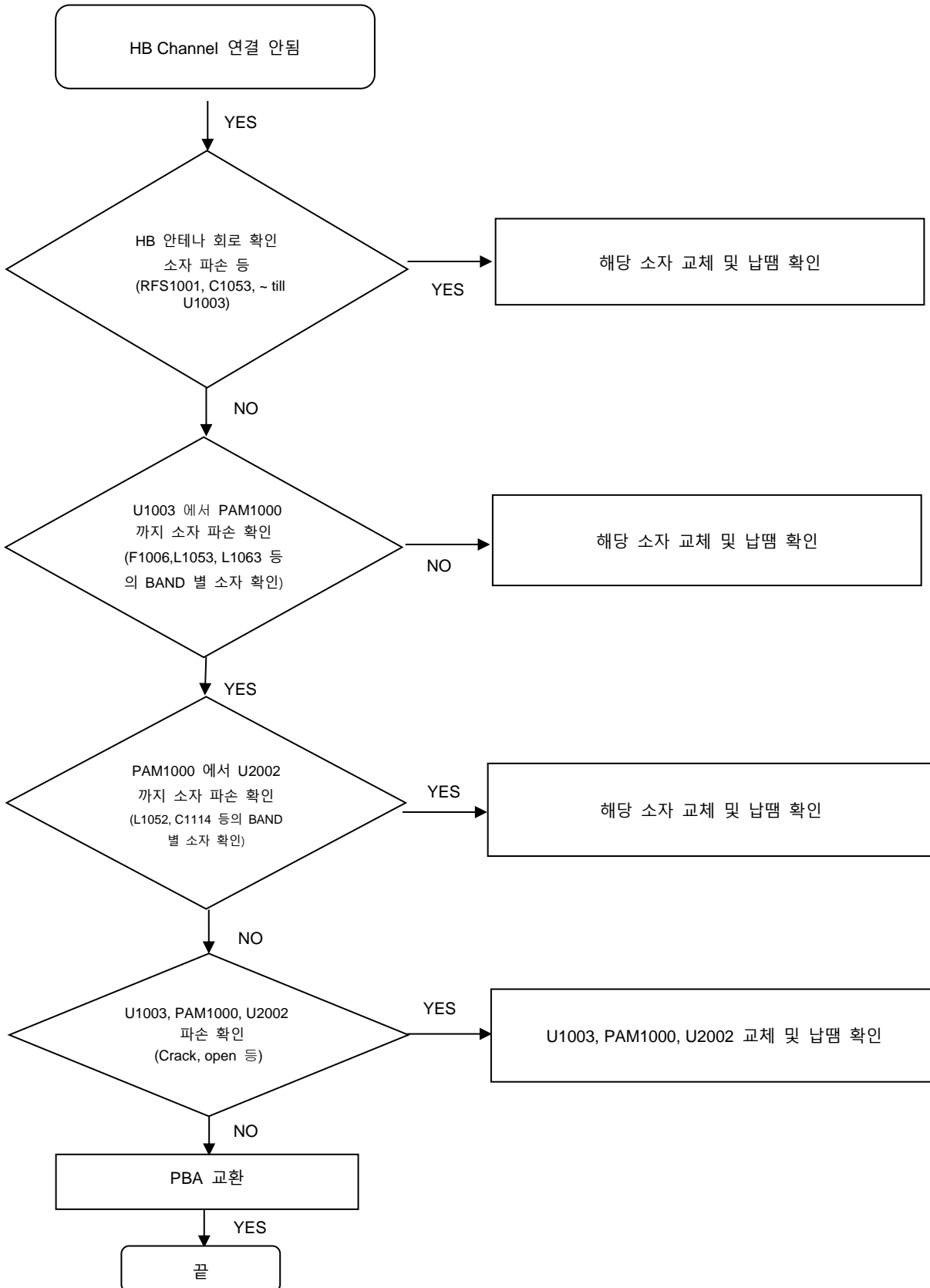
## 8. Level 3 Repair

### 8-4-21. MID BAND TX (DCS, PCS, W1, W2, LTE 1, 3)



## 8. Level 3 Repair

### 8-4-22. HIGH BAND TX (LTE 7,38,40,41)

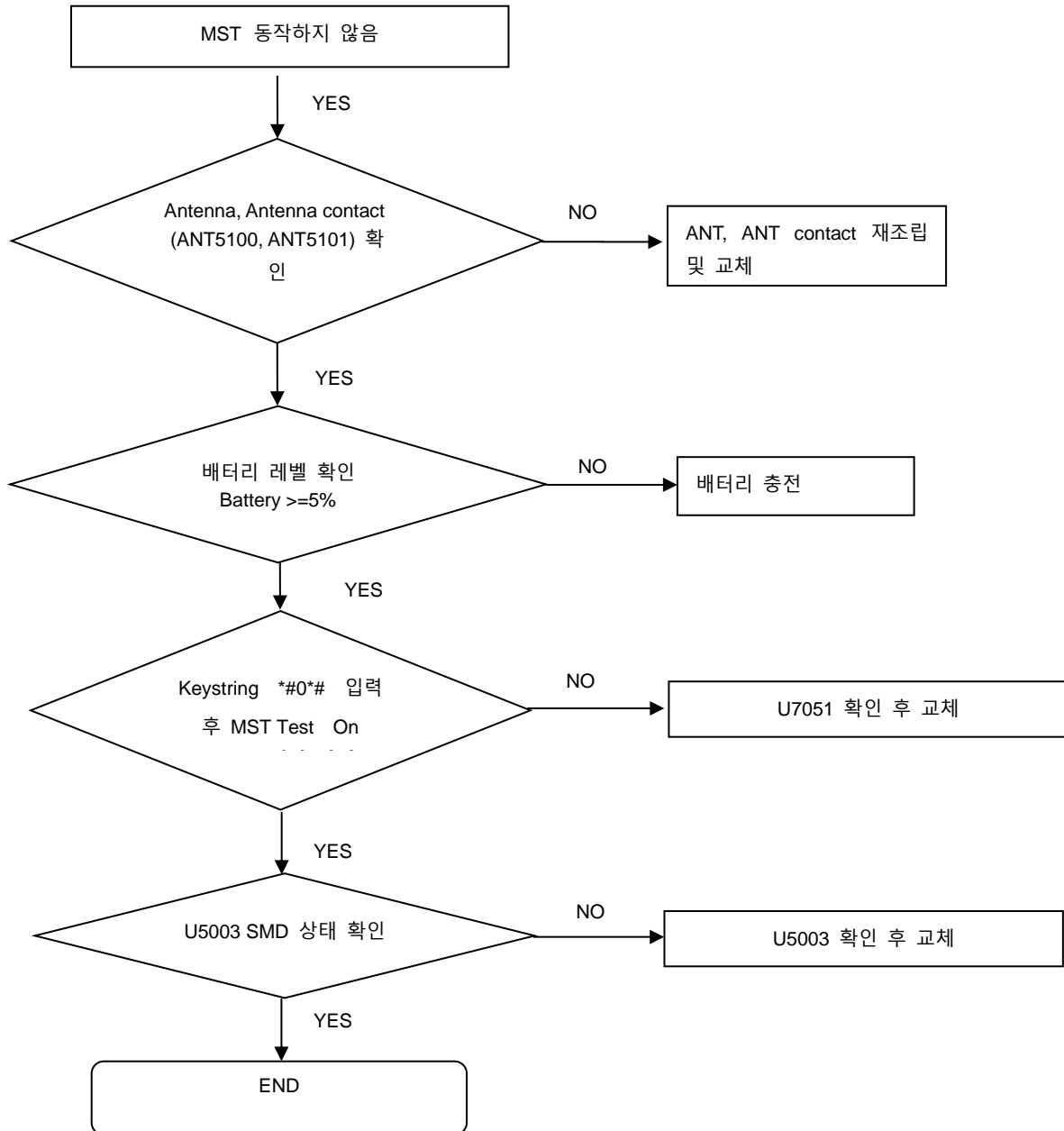


---

## 8. Level 3 Repair

---

### 8-4-23. MST



---

## 8. Level 3 Repair

---

### 8-4-24. TDMB

