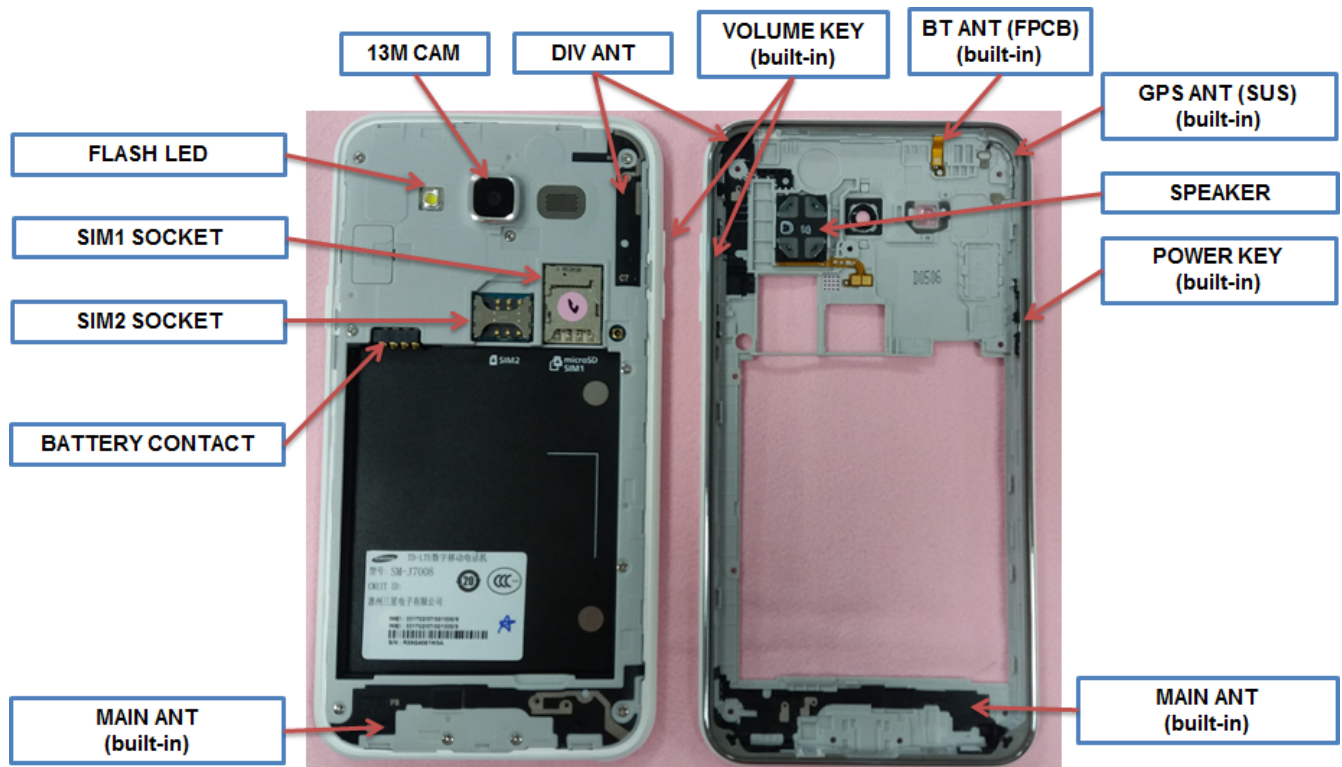

7. Level 2 Repair

7-1. Components on the Rear Case







7-2. Pre-requisite

	
Tweezers / Disass'y Stick / Screw Driver	Anti-static Gloves
	
Anti-static Mat	Glass Absorber
	
OCTA Disassembly Holder	OCTA Disassembly Upper
	
Ethyl Alcohol	Clean Swab

7-3. Parts which must be changed after repair

BOM Discription	Picture	Remarks
A/S-MAIN WINDOW TAPE_R/KIT [GH02-10746A]	 A photograph of a main window tape assembly. It consists of a black rectangular frame with rounded corners, mounted on a green adhesive tape. The frame has small circular cutouts at the top and bottom center.	Replace when repair Front part
A/S-Touch Key Ass'y_R/KIT) [GH96-08865A]	 A photograph of a touch key assembly. It is a small, rectangular component with a black plastic housing and a blue circuit board. The assembly includes a small circular touch sensor and a connector at the end.	

7-4. Disassembly

<div data-bbox="164 331 240 390">1</div> <div data-bbox="264 338 797 390"> Apart LCD CAP from REAR </div> 	<div data-bbox="841 348 917 407">2</div> <div data-bbox="946 338 1463 407"> Loosen screw 10 points in the REAR </div> 
<p>※ Caution</p> <p>1) Be care of scratch</p>	<p>※ Caution</p> <p>-Torque : 1.2 Kgf · cm</p> <p>-Size : 1.4*3 (6001-003162)</p>
<div data-bbox="164 1136 240 1194">3</div> <div data-bbox="264 1136 797 1194"> Heating Device </div> 	<div data-bbox="841 1146 917 1205">4</div> <div data-bbox="946 1136 1463 1205"> Detach OCTA </div> 
<p>※ Caution</p> <p>1) Be care of checking temperature and time</p>	<p>※ Caution</p> <p>1) Be care of damage to OCTA</p>

<div data-bbox="168 239 240 296" data-label="Text">5</div> <div data-bbox="261 239 792 296" data-label="Section-Header">Detach OCTA</div> <div data-bbox="209 315 761 821" data-label="Image"> </div>	<div data-bbox="836 239 907 296" data-label="Text">6</div> <div data-bbox="928 239 1459 296" data-label="Section-Header">Disassemble REAR and Bracket ass'y</div> <div data-bbox="863 323 1416 831" data-label="Image"> </div>
<div data-bbox="168 863 792 940" data-label="Text"> <p>※ Caution</p> <p>1) Be care of damage to LCD TAPE on Bracket</p> </div>	<div data-bbox="836 863 1459 940" data-label="Text"> <p>※ Caution</p> <p>1) Be care of damage to REAR Hook</p> </div>
<div data-bbox="168 957 240 1014" data-label="Text">7</div> <div data-bbox="261 957 792 1014" data-label="Section-Header">Disassemble PBA and Bracket ass'y</div> <div data-bbox="360 1026 664 1591" data-label="Image"> </div>	<div data-bbox="836 957 907 1014" data-label="Text">8</div> <div data-bbox="928 957 1459 1014" data-label="Section-Header">Disassemble PARTs</div> <div data-bbox="1015 1047 1318 1606" data-label="Image"> </div>
<div data-bbox="168 1650 792 1810" data-label="Text"> <p>※ Caution</p> <ul style="list-style-type: none"> - Torque : 1.2 Kgf · cm - Size : 1.4*2.3 (6001-003180) - Be careful of the hook of bracket (1 point) </div>	<div data-bbox="836 1650 1459 1810" data-label="Text"> <p>※ Caution</p> <ul style="list-style-type: none"> - Be careful of damage to Electric materials </div>

7-5. Assembly

<div data-bbox="186 304 211 331">1</div> <div data-bbox="380 304 662 331">Assemble LCD & TSP</div> 	<div data-bbox="852 304 876 331">2</div> <div data-bbox="1045 304 1357 331">Assemble Bracket Ass'y</div> 
<p>※ Caution</p> <p>1) Be care of FPCB</p> <p>2) Don't forget to connect TSP FPCB Conn.</p>	<p>※ Caution</p> <p>- Be care of scratch and molding damage</p>
<div data-bbox="198 1119 222 1146">3</div> <div data-bbox="329 1119 737 1146">Assemble PBA and Front Ass'y</div> 	<div data-bbox="852 1119 876 1146">4</div> <div data-bbox="1049 1119 1333 1146">Assemble REAR Ass'y</div> 
<p>※ Caution</p> <p>1) Be care of Torque:1.2 Kgf*cm</p> <p>2) Combine the Bracket hook 1 point correctly.</p>	<p>※ Caution</p> <p>1) Be care of damage to the FPCB</p>

<div data-bbox="167 262 792 317" data-label="Section-Header"> <div>5</div> <div>Assemble REAR Ass'y and Front ass'y</div> </div> <div data-bbox="324 336 638 894" data-label="Image"> </div>	<div data-bbox="826 262 1451 317" data-label="Section-Header"> <div>6</div> <div>Assemble LCD ass'y and REAR ass'y</div> </div> <div data-bbox="980 327 1284 884" data-label="Image"> </div>
<div data-bbox="167 957 654 1020" data-label="Text"> <p>※ Caution 1) Be care of Torque:1.2 Kgf*cm</p> </div>	<div data-bbox="826 915 1463 1052" data-label="Text"> <p>※ Caution 1. Insert LCD Connector into the bracket hole correctly. 2. Insert RCV deco into the TSP hole correctly. 3. Attach LCD ass'y and Bracket ass'y.</p> </div>
<div data-bbox="167 1077 792 1131" data-label="Section-Header"> <div>7</div> <div>Assemble LCD CAP</div> </div> <div data-bbox="324 1167 638 1726" data-label="Image"> </div>	<div data-bbox="826 1077 1451 1131" data-label="Section-Header"> <div>8</div> <div>Press OCTA</div> </div> <div data-bbox="829 1268 1386 1608" data-label="Image"> </div>
<div data-bbox="167 1776 487 1839" data-label="Text"> <p>※ Caution 1) Be care of Scratch</p> </div>	<div data-bbox="826 1776 1252 1839" data-label="Text"> <p>※ Caution 1) Be care of force and time</p> </div>