



Installing iPhone 3G Logic Board

Tools used in this guide

- [Metal Spudger](#)
- [Phillips #00 Screwdriver](#)
- [Spudger](#)



Step 1 - Logic Board

- × Remove the two Phillips #00 screws from the dock-connector end of the iPhone.



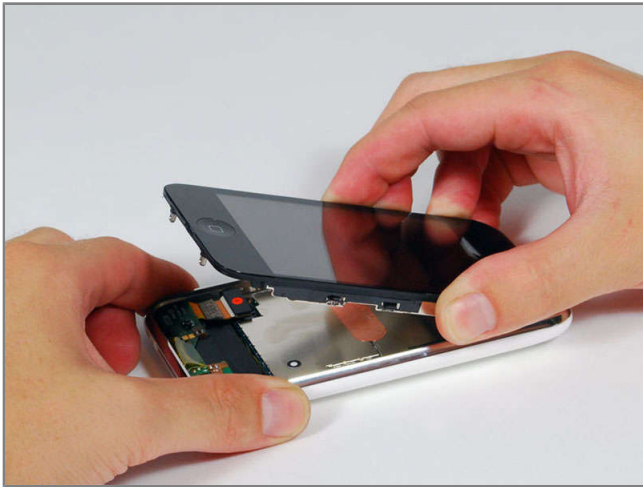
Step 2

- There is a fragile rubber gasket between the silver front bezel and black display assembly. Keep your tool as close to the silver front bezel as possible to prevent damaging the gasket.
- We recommend a metal spudger for this task, but an X-acto knife should also work, just be careful not to slip.
- Insert a metal spudger into the seam between the silver front bezel and the black display assembly on the edge closest to the home button. Gently pry the display assembly up from its bezel.



Step 3

- If necessary, insert the metal spudger in the same manner on the side of the iPhone and continue to pry up gently. Stop using the metal spudger once the display assembly is up enough that you can lift it up with your fingers.



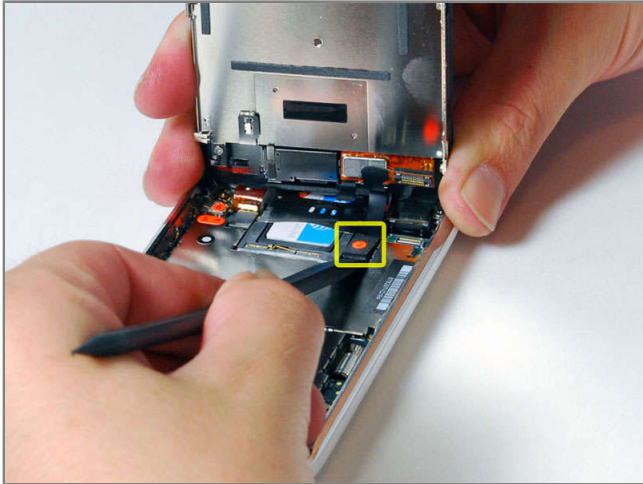
Step 4

- The display assembly is still connected to the iPhone by several cables, so don't try to remove it entirely just yet.
- Rotate the display assembly up until it is at an angle of approximately 45 degrees.



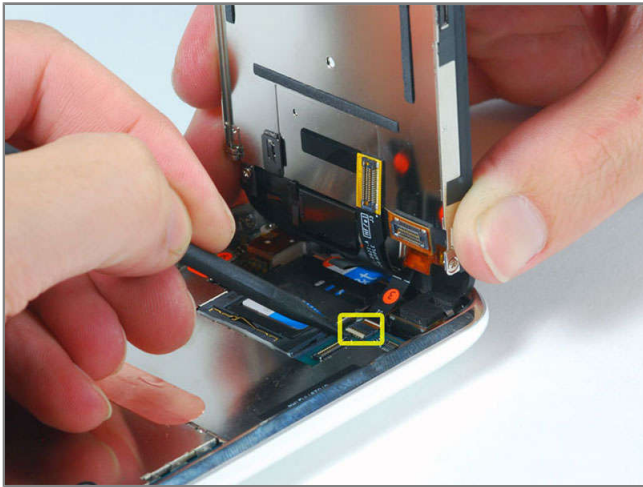
Step 5

- ⇒ Continue to hold the display assembly with one hand, and use your other hand and a spudger to disconnect the black ribbon cable labeled "1."



Step 6

- Rotate the display assembly up until it is roughly vertical. This will allow easier access for disconnecting the remaining cables.
- ➔ Use a spudger to disconnect the black ribbon cable labeled "2."



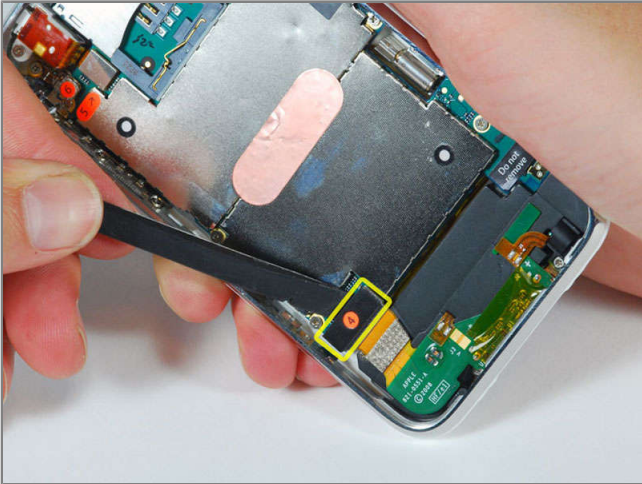
Step 7

- ➔ Use a spudger to flip up the white plastic tab holding the remaining ribbon cable in place. The white tab will rotate up 90 degrees, releasing the ribbon cable.
- Slide the black ribbon cable out of its connector, and remove the display assembly from the iPhone.



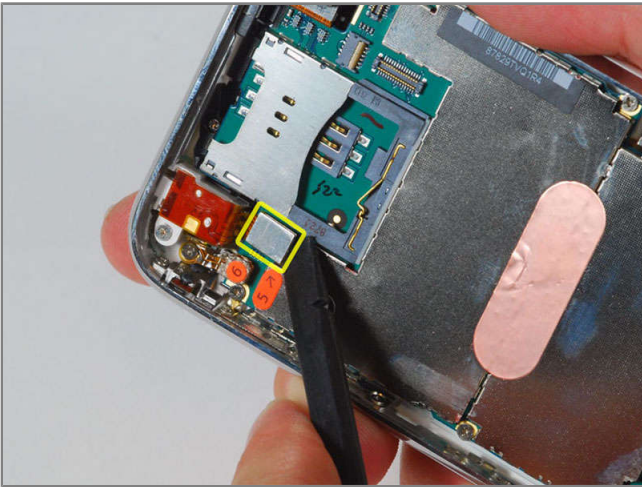
Step 8

- Insert your SIM eject tool or a paper clip into the hole next to the headphone jack.
- Press down on the tool until the SIM card tray pops out.
- Grasp the SIM card tray and slide it out of the iPhone.



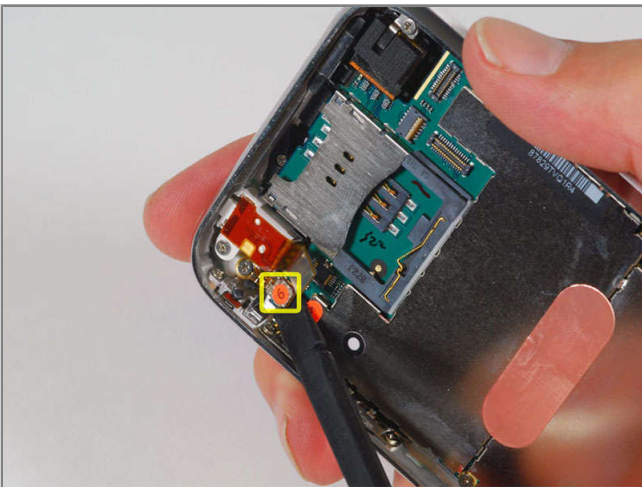
Step 9

→ Use a spudger to disconnect the ribbon cable labeled "4."



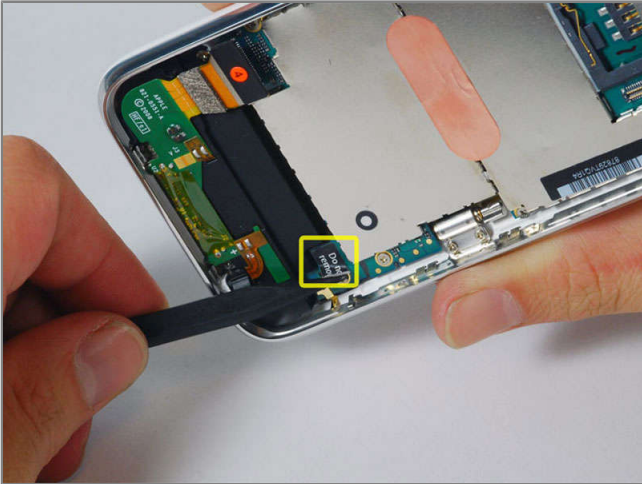
Step 10

→ Use a spudger to disconnect the ribbon cable labeled "5."



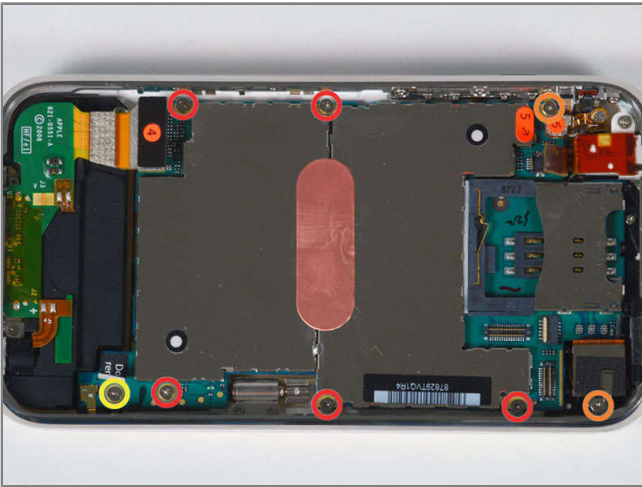
Step 11

→ Use a spudger to disconnect the ribbon cable labeled "6."



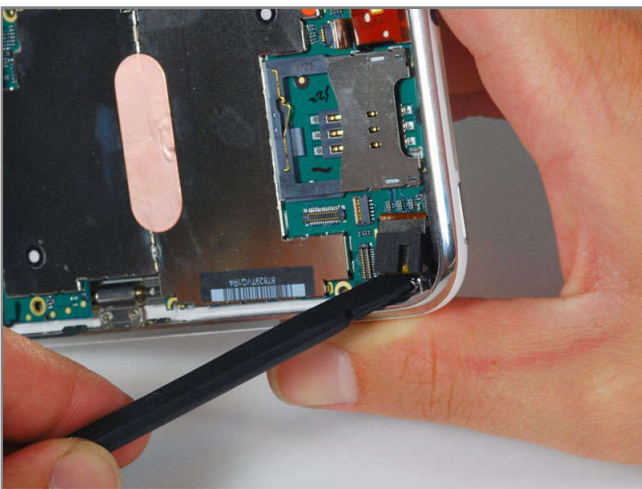
Step 12

- Carefully peel up the small sticker labeled "Do not remove."



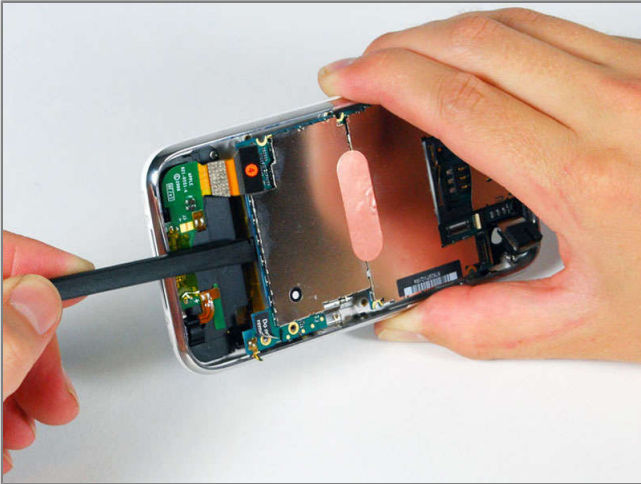
Step 13

- Remove the following 8 screws:
 - ✗ Five 2.3 mm Phillips #00 screws with partial threads securing the logic board to the rear panel.
 - ✗ Two 2.3 mm Phillips #00 screws with full threads securing the logic board and camera.
 - ✗ One 2.9 mm Phillips #00 screw from beneath the "Do not remove" sticker.



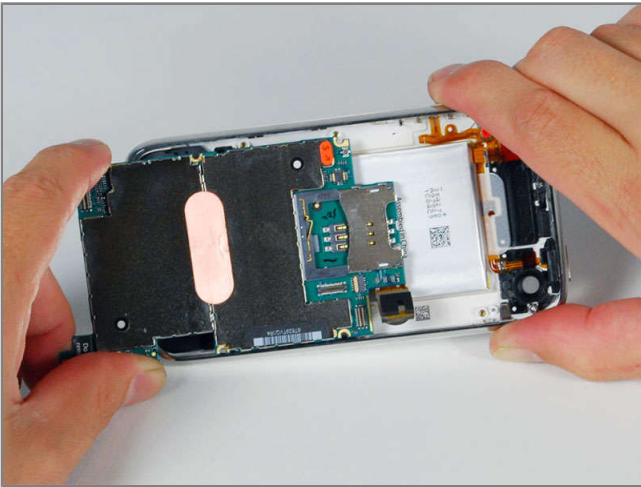
Step 14

- Use a spudger to gently pry the camera up and out of its housing in the rear panel. The camera cannot be removed entirely yet because it's connected to the bottom of the logic board.



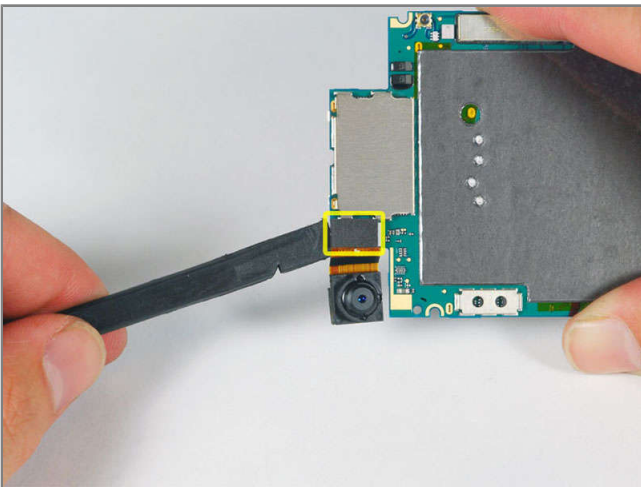
Step 15

- Use a spudger to gently pry up the end of the logic board closest to the dock connector.
- If the board won't lift up, double check to make sure all the screws securing the logic board have been removed.



Step 16

- Slide the logic board towards the dock connector and out of the iPhone.



Step 17

- Use a spudger to disconnect the camera from the logic board.